



Performance Air Intake Kit Part Number: 827-702

**2019-2022 BMW X5 xDrive40i 3.0L B58, G05
2020-2022 BMW X5 sDrive40i 3.0L B58, G05
2020-2022 BMW X6 xDrive40i 3.0L B58, G06
2020-2021 BMW X6 sDrive40i 3.0L B58, G06
2019-2022 BMW X7 xDrive40i 3.0L B58, G07**

Installation Instructions

For technical inquiries please email us at tech@hpsperformanceproducts.com

In the email, please include the following information for faster response:

- Year / Make / Model / Engine of your vehicle.
- If it is a fitment issue, please include pictures showing the fitment problem.
- If there are missing parts, please list the part number(s) from the bill of materials on the 2nd page.
- Optional but recommended – Your contact phone number and preferred call back time.

You can also give us a call via 626-747-9200 for tech support Monday-Friday, 9:00am-5:00pm Pacific Time.

Bill of Materials

Kit Number: 827-702

Description	Prep	Part Number	Qty	Check
Air Intake Pipe	1	529-887	1	
Heat Shield	2	531-888	1	
HPS Performance Air Filter	3	HPS-4297	1	
3.25" – 3.50" Reducer Coupler x 3.00" Long	4	P3SR-325-350-L3	1	
3.50" Hump Coupler x 3.00" Long	4	P3SHC-350-L3	1	
T-bolt clamp for 3.50" Hose	4	SSTC-89-97	2	
Embossed clamp for 3.50" Hose	4	EMSC-80-100	2	
Bubble Edge Trim x 50 inches	4	BUBBLE EDGE TRIM	1	
3.50" – 6.00" Velocity Stack	5	HW-VS-350-600	1	
6mm Bolt x 12mm Long	5	HW-B6-12	3	
6mm Flat Washer x 16mm OD	5	HW-FW6L	3	
6mm Heat Shield Mounting Bung	5	HSM-M6-1028	1	
4mm Allen bolts x 8mm long	5	HW-B4-8	2	

- **Before installing any parts of this intake system, please read the instructions thoroughly.**
- **Verify the contents of this intake kit before disassembling your vehicle.**
- **Report any defective or missing parts to HPS directly. The HPS dealer you purchased this product from might not have the replacement parts you need.**
- **Installation requires moderate mechanical skills. A qualified mechanic is highly recommended.**
- **Do not attempt to install the intake system while the engine is hot.**
- **This installation may require removal of coolant lines that may be hot.**
- **For technical inquiries, please e-mail us at tech@hpsperformanceproducts.com**

PLEASE READ CAREFULLY BEFORE INSTALLATION!

This installation is not for the novice customer. Install this product with EXTREME caution! Misuse of this product can destroy your engine! If you are not mechanically inclined, please have a professional automotive mechanic install this kit.

NOTE: HPS holds no responsibility for any engine damage that results from misuse of this product.

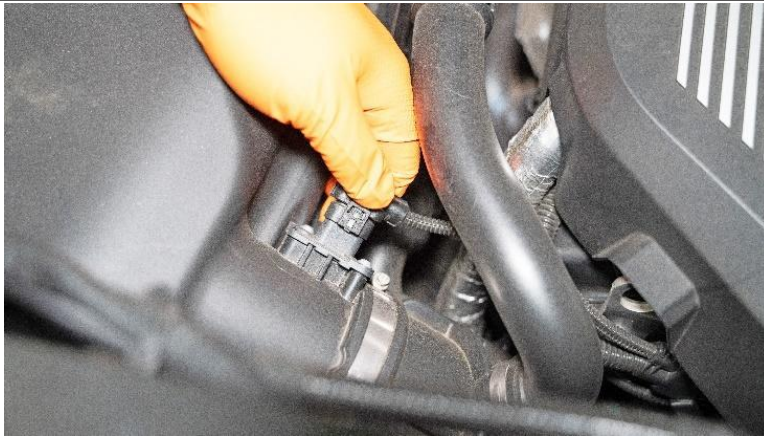
GETTING STARTED

1. Turn the ignition OFF and disconnect the vehicle's negative battery cable. If the engine has run within the past two hours let it cool down.

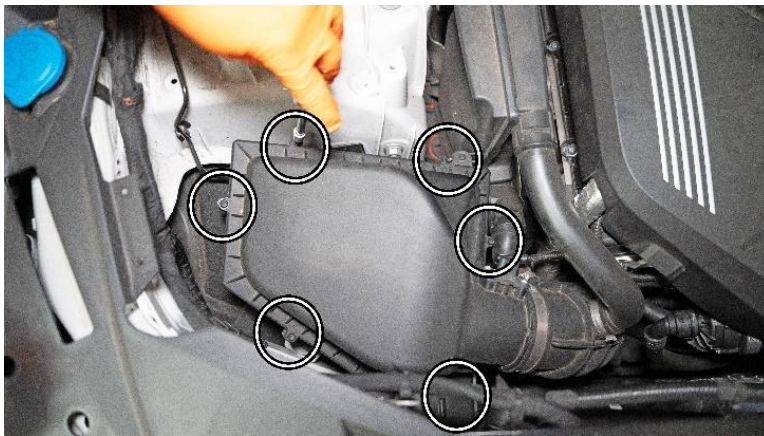
NOTE: Disconnecting the negative battery cable erases pre-programmed electronic memories. Write down all memory settings before disconnecting the negative battery cable. Some radios will require an anti-theft code to be entered after the battery is reconnected. The anti-theft code is typically supplied with your owner's manual. In the event your vehicles' anti-theft code cannot be recovered, contact an authorized dealership to obtain your vehicles anti-theft code. We also highly recommend NOT discarding any stock parts after the installation.



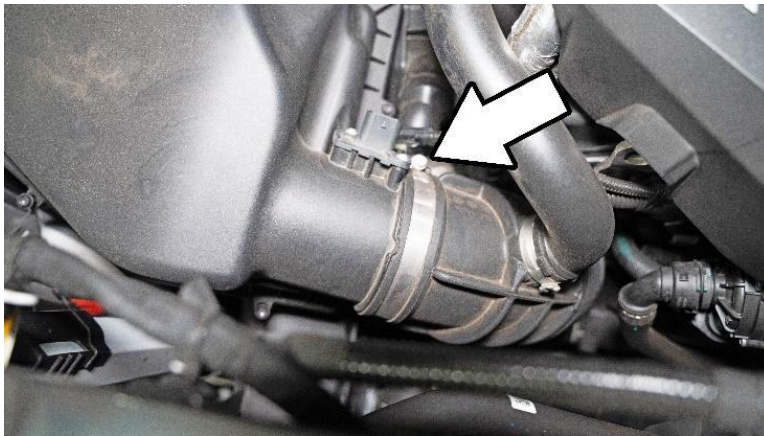
2. Remove the passenger side strut tower brace using a E12 and 18mm socket.



3. Disconnect the sensor electrical harness connector.



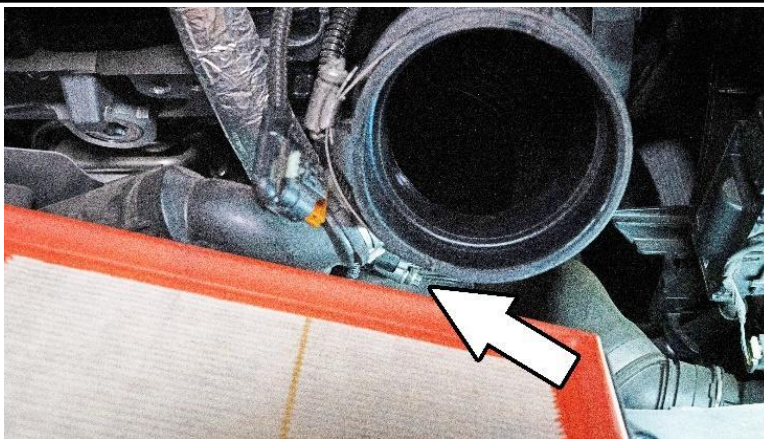
4. Loosen the 6 bolts securing the upper air box assembly using a T25 torx bit.



5. Loosen the hose clamp securing the intake hose from the upper air box.



6. Disconnect the upper air box portion from the intake hose and remove it from the vehicle.



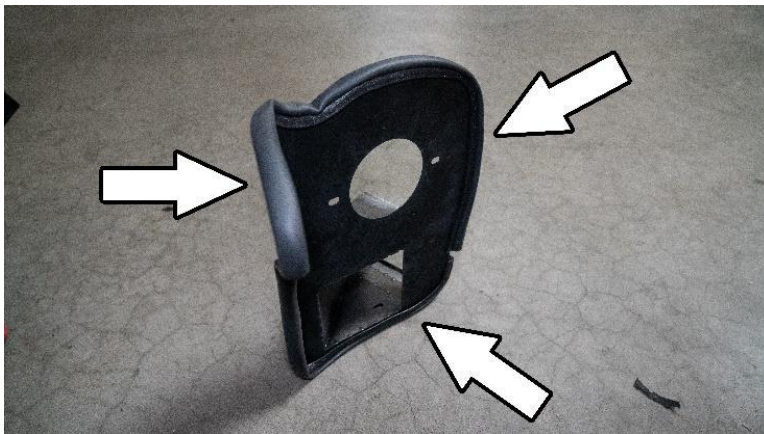
7. Loosen the hose clamp securing the intake hose from the turbo inlet housing.



8. Lift up and pop the lower air box from its mounting grommets and disconnect the hose from the turbo inlet housing then carefully remove the assembly from the engine bay.



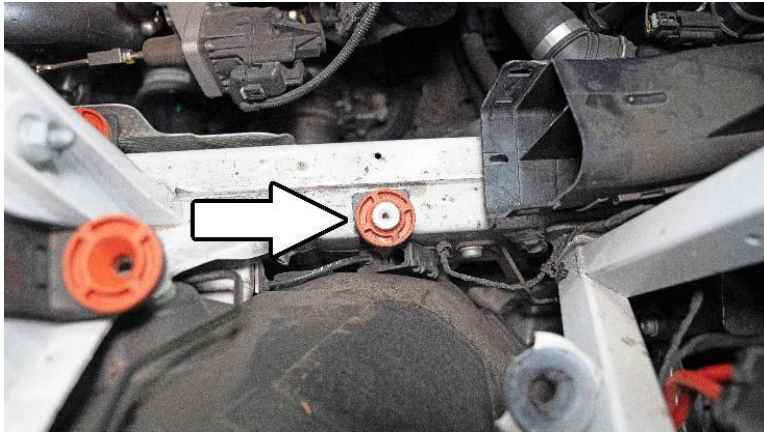
9. Insert the provided reducer coupler along with the embossed clamps onto the turbo inlet housing.



10. Install the provided bubble edge trim onto the HPS heat shield.



11. Install and secure the provided velocity stack onto the heat shield using the M6 x12mm bolts and washers.



12. Insert the provided M6 bung into the bottom factory heat shield grommet.



13. Transfer and secure the sensor onto the HPS intake pipe using the provided M4 bolts.



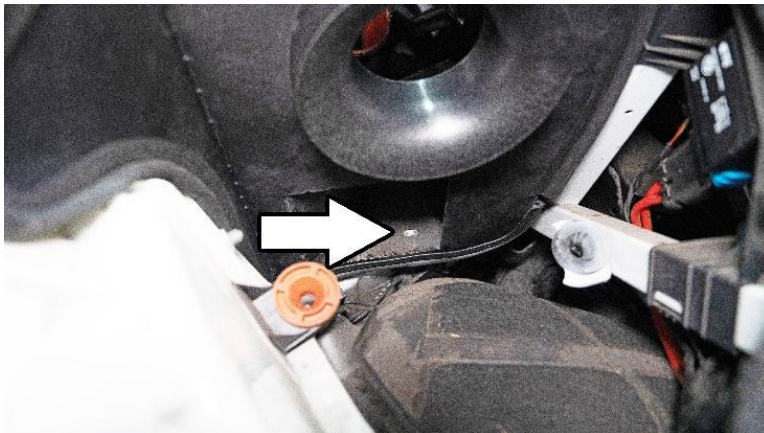
14. Insert the HPS hump coupler onto the sensor side of the HPS intake pipe with the provided T-bolt clamps.



15. Insert the HPS intake into the reducer coupler.



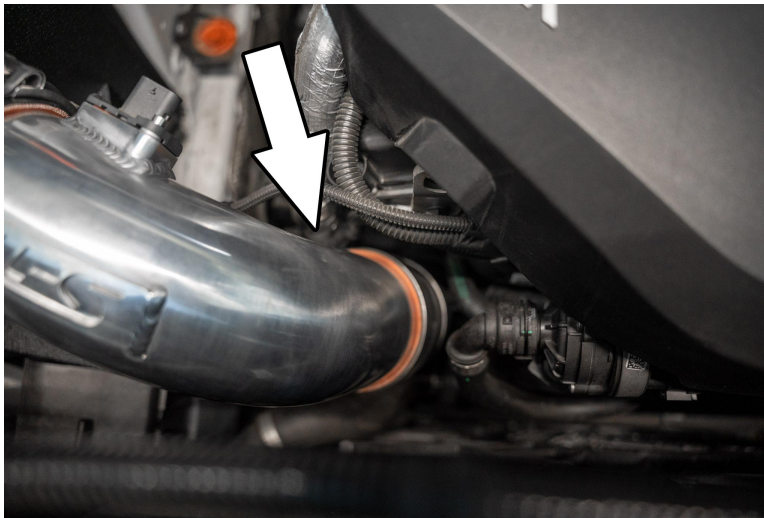
16. Insert the heat shield into the vehicle.



17. Secure the heat shield onto the M6 bung using the provided M6x12mm bolt and washer.



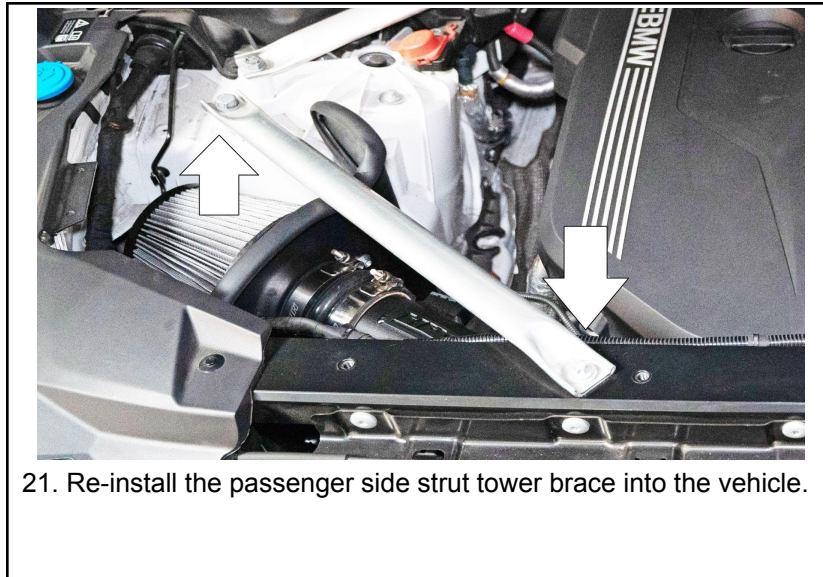
18. Fasten the T-bolt clamp to secure the hump coupler onto the velocity stack.



19. Fasten the remaining embossed clamp to secure the reducer coupler onto the intake pipe.



20. Insert and fasten the HPS performance air filter to the velocity stack. Reconnect the sensor.



21. Re-install the passenger side strut tower brace into the vehicle.

Final Steps

Once the intake has been positioned, tighten all of the clamps and secure all of the parts.

Upon completion of the installation, reconnect the negative battery terminal before you start the engine. Double check to make sure everything is tight and properly positioned before starting the vehicle.

Start the engine. Let the car idle for 3 minutes. Perform a final inspection before driving. Listen carefully for any odd noises, rattles and/or air leaks prior to taking it for a test drive. If any problems arise go back and check the vacuum lines, hoses and clamps that may be causing leaks or rattles and correct the problem.

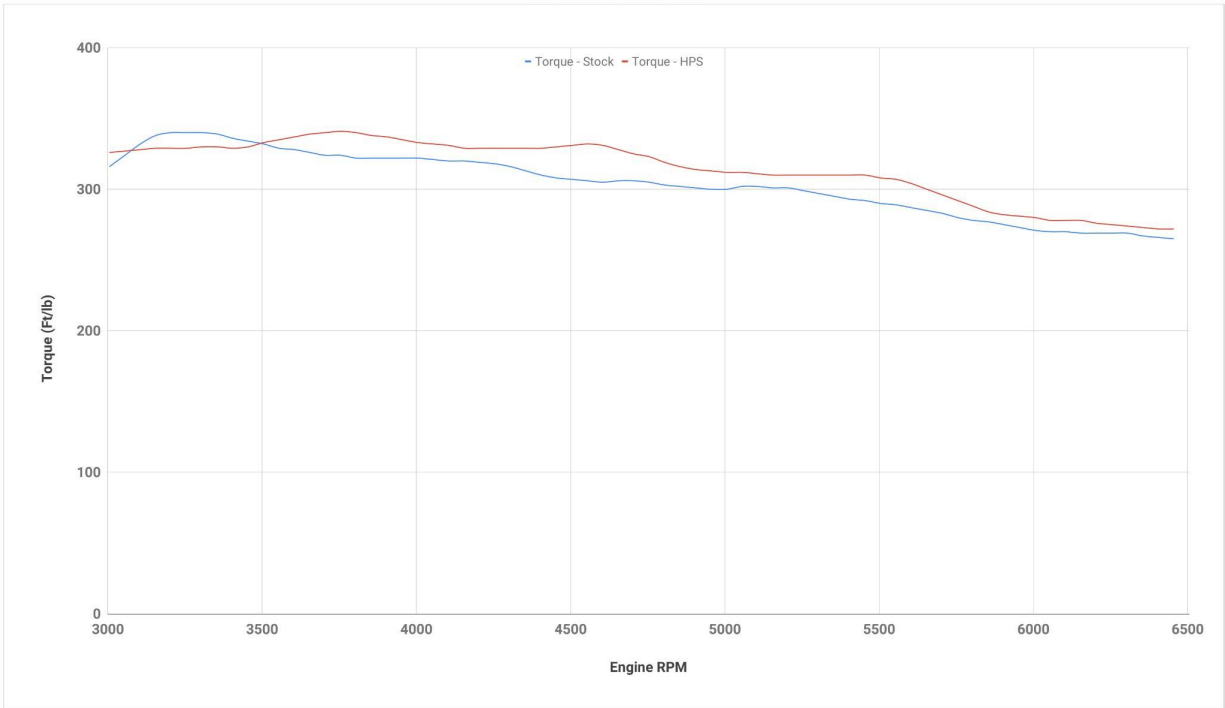
Periodically, recheck the alignment of the intake system and make sure there is proper clearance around and along the length of the intake. Failure to follow proper maintenance procedures may cause damage to the intake and will void the warranty.



HPS Performance Air Intake Kit with Heat Shield (827 Series)
2019-2022 BMW X5 xDrive40i 3.0L B58, G05
2020-2022 BMW X5 sDrive40i 3.0L B58, G05
2020-2022 BMW X6 xDrive40i 3.0L B58, G06
2020-2021 BMW X6 sDrive40i 3.0L B58, G06
2019-2022 BMW X7 xDrive40i 3.0L B58, G07
Part Number: 827-702

Maximum Torque Gains = 26 ft/lb @ 4555 rpm

Tested Vehicle 2020 BMW X5 xDrive40i 3.0L B58



HPS Performance Air Intake Kit with Heat Shield (827 Series)
2019-2022 BMW X5 xDrive40i 3.0L B58, G05
2020-2022 BMW X5 sDrive40i 3.0L B58, G05
2020-2022 BMW X6 xDrive40i 3.0L B58, G06
2020-2021 BMW X6 sDrive40i 3.0L B58, G06
2019-2022 BMW X7 xDrive40i 3.0L B58, G07
Part Number: 827-702

Maximum Horsepower Gains = 22 whp @ 4555 rpm

Tested Vehicle 2020 BMW X5 xDrive40i 3.0L B58

