



Performance Air Intake Kit
Part Number: 827-406

Honda 2018-2022 Accord 1.5T

Installation Instructions

For technical inquiries please email us at tech@hpsperformanceproducts.com

In the email, please include the following information for faster response:

- Year / Make / Model / Engine of your vehicle.
- If it is a fitment issue, please include pictures showing the fitment problem.
- If there are missing parts, please list the part number(s) from the bill of materials on the 2nd page.
- Optional but recommended – Your contact phone number and preferred call back time.

You can also give us a call via 626-747-9200 for tech support Monday-Friday, 9:00am-5:00pm Pacific Time.

Bill of Materials

Kit Number: 827-406

Line #	Description	Part Number	Qty
1	Air Intake Pipe	529-625	1
2	Heat Shield	531-889	1
3	Heat Shield Lid	531-891	1
4	Heat Shield Scoop	531-892	1
5	Heat Shield Bracket	530-893	1
6	"L"Bracket	530-284	2
7	HPS Performance Air Filter	HPS-4336	1
8	Silicone Reducer	P3SR-250-275-L25	1
9	Hose Clamp	EMSC-60-80	2
10	Bolt, M6 x 1.0, 16mm Long	HW-B6-16	4
11	Bolt, M4 x 0.7, 8mm Long	HW-B4-8	2
12	Bolt, M5 x 0.8, 14mm Long	HW-B5-14	5
13	M6 Flat Washer 16mm OD	HW-FW6L	10
14	M6 Flange Nut	HW-N6	6
15	Rubber Vibration Mount M6 1/2" Tall	HW-RM6-50	2
16	Bubble Edge Trim	7750B2X1/16C	12 inches
17	Thin Edge Trim	75B7X1/16	21 inches
18	Rubber Edge Trim (adhesive) 3 Inches	93085K15	1

- Before installing any parts of this intake system, please read the instructions thoroughly.
- Verify the contents of this intake kit before disassembling your vehicle.
- DO NOT INSTALL IF ANY PARTS ARE MISSING OR DAMAGED. CONTACT tech@hpsperformanceproducts.com IMMEDIATELY. WE ARE NOT RESPONSIBLE FOR ANY DAMAGE CAUSED DUE TO IMPROPER INSTALLATION.
- Installation requires moderate mechanical skills. A qualified mechanic is highly recommended.
- Do not attempt to install the intake system while the engine is hot.
- This installation may require removal of coolant lines that may be hot.
- For technical inquiries, please email us at tech@hpsperformanceproducts.com.

PLEASE READ CAREFULLY BEFORE INSTALLATION!

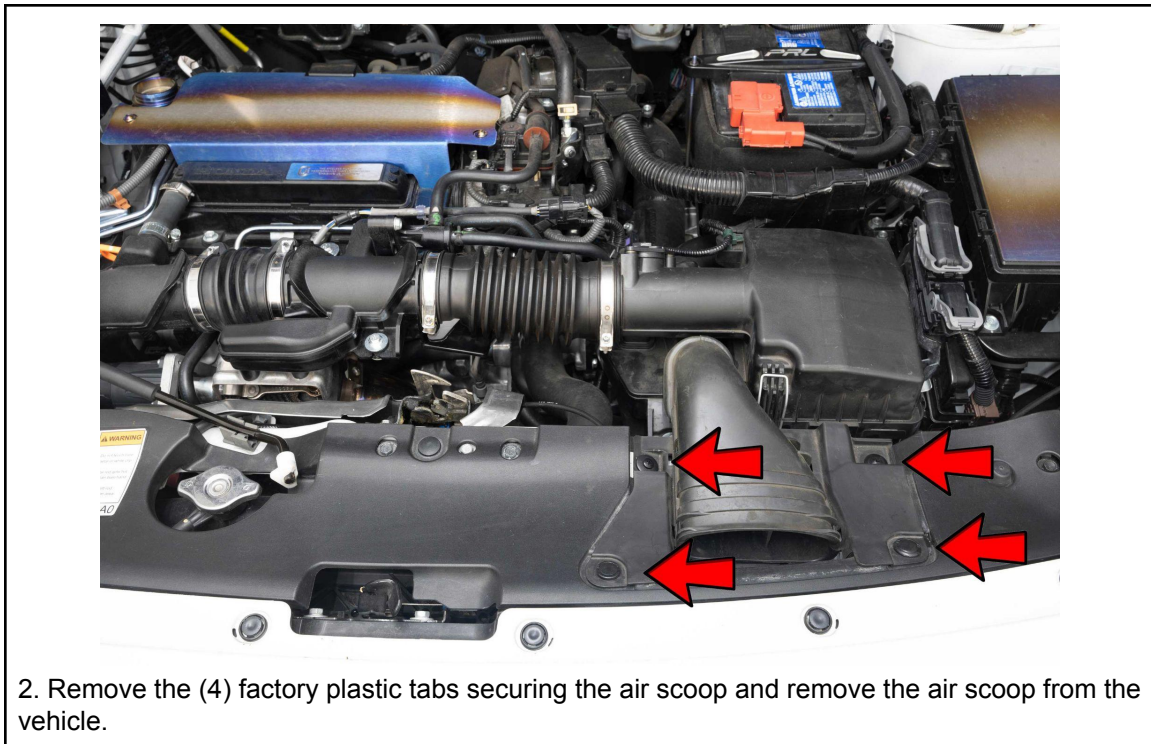
This installation is not for the novice customer. Install this product with EXTREME caution! Misuse of this product can destroy your engine! If you are not mechanically inclined, please have a professional automotive mechanic install this kit.

NOTE: HPS holds no responsibility for any engine damage that results from misuse of this product.

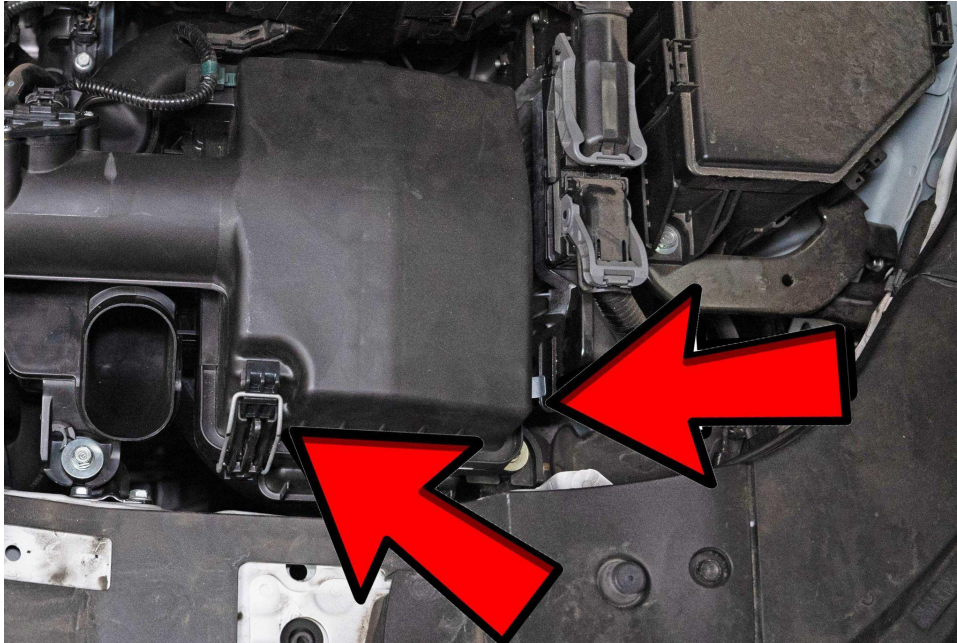
GETTING STARTED

1. Turn the ignition OFF and disconnect the vehicle's negative battery cable. If the engine has run within the past two hours let it cool down.

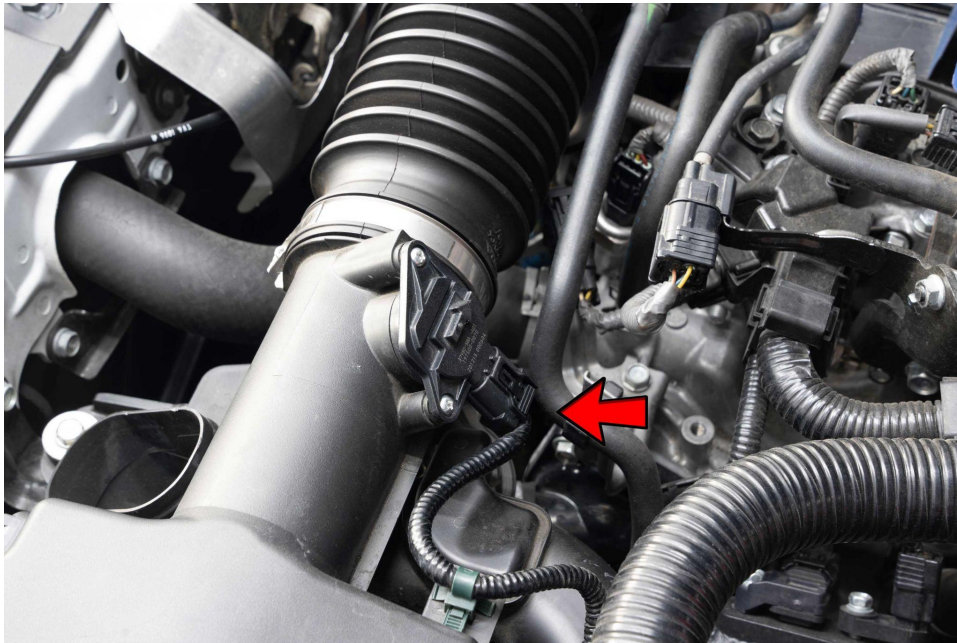
NOTE: Disconnecting the negative battery cable erases pre-programmed electronic memories. Write down all memory settings before disconnecting the negative battery cable. Some radios will require an anti-theft code to be entered after the battery is reconnected. The anti-theft code is typically supplied with your owner's manual. In the event your vehicles' anti-theft code cannot be recovered, contact an authorized dealership to obtain your vehicle's anti-theft code. We also highly recommend NOT discarding any stock parts after the installation.



2. Remove the (4) factory plastic tabs securing the air scoop and remove the air scoop from the vehicle.



3. Release the factory clips securing the upper airbox from the lower airbox.



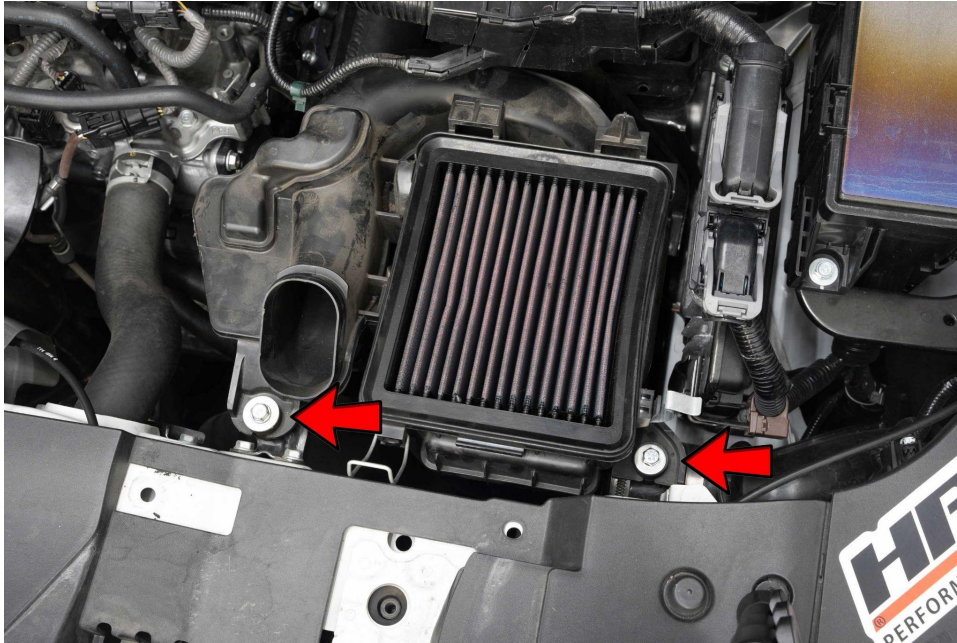
4. Disconnect the factory mass air flow sensor harness connector.



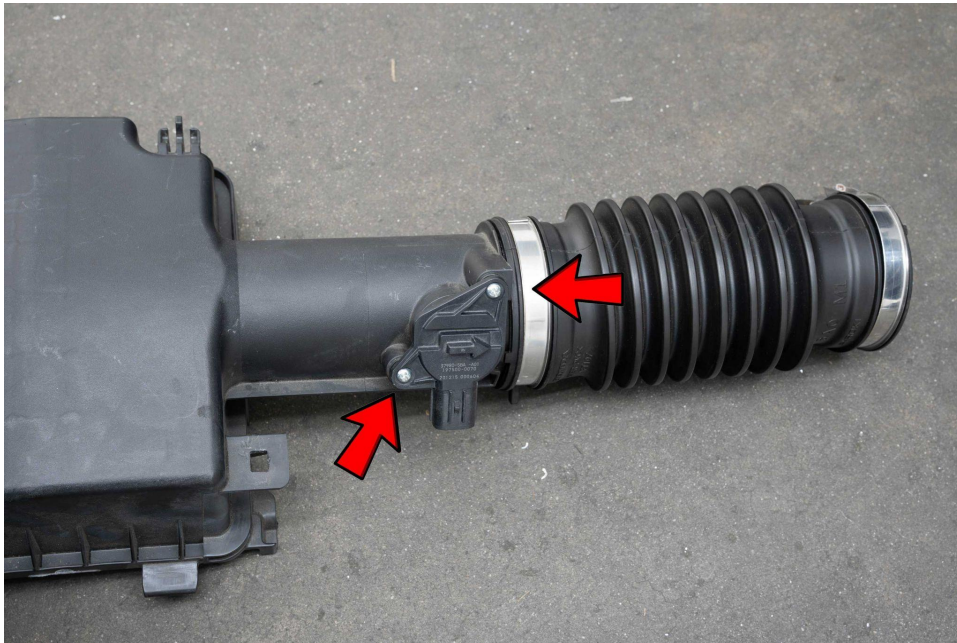
5. Loosen the OEM hose clamp securing the intake hose using a 5.5mm socket.



6. Lift up the upper airbox and release the plastic tab securing the mass airflow sensor harness from the upper airbox.



7. Remove the (2) 10mm bolts securing the factory lower airbox.



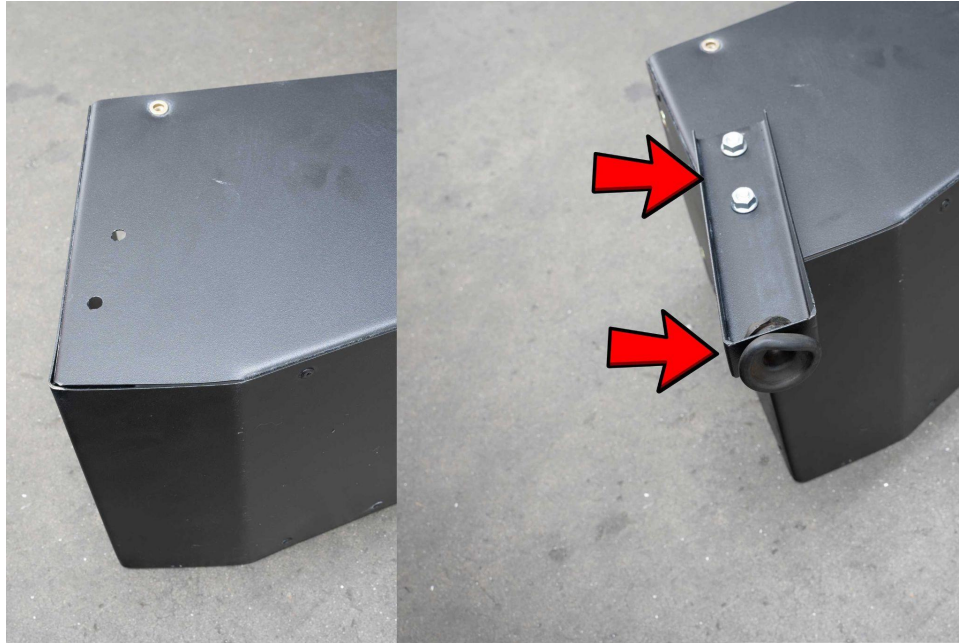
8. Remove the (2) factory screws and remove the mass air flow sensor.



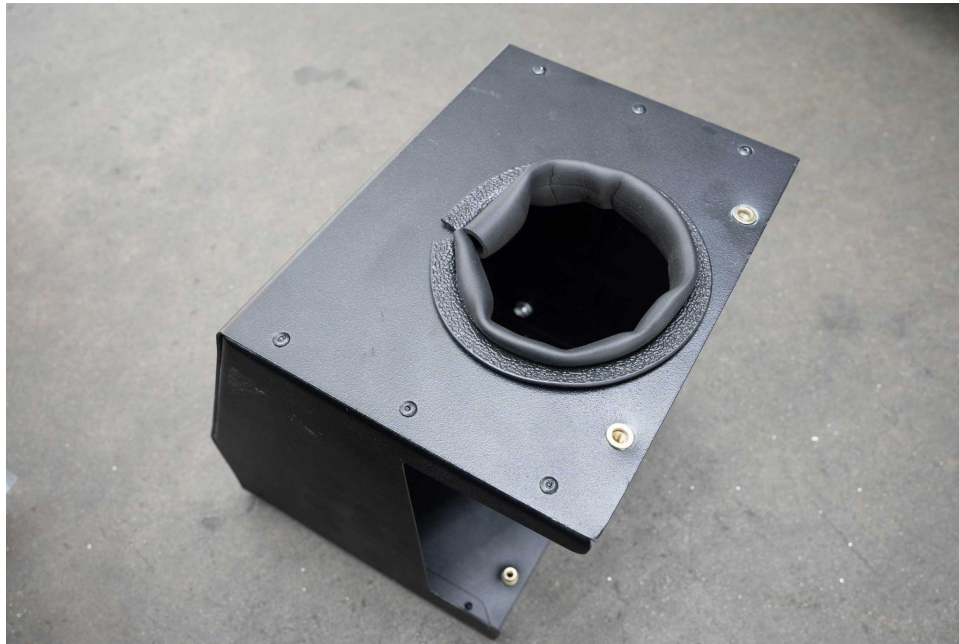
9. Install the mass air flow sensor onto the HPS intake pipe using the provided (2) M4 x 8mm bolts.



10. Attach the provided adhesive edge trim to the bottom of the HPS heat shield as shown in the image above.



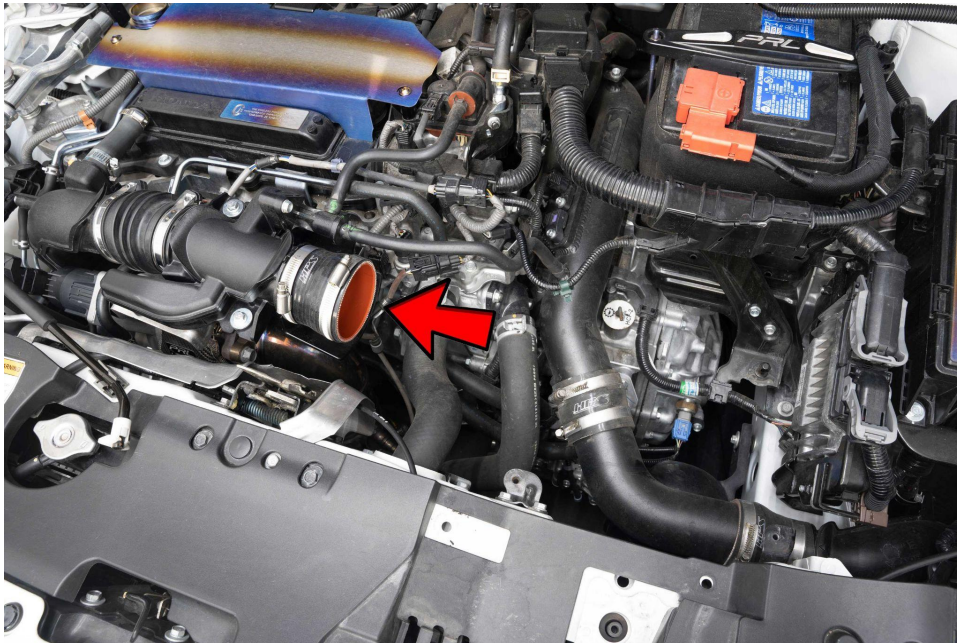
11. Install the heat shield bracket onto the HPS heat shield and secure it with the provided (2) M6 x 16mm bolts, (2) M6 flange nuts, and (4) M6 flat washers. Install the factory rubber mount onto the bottom of the heat shield bracket.



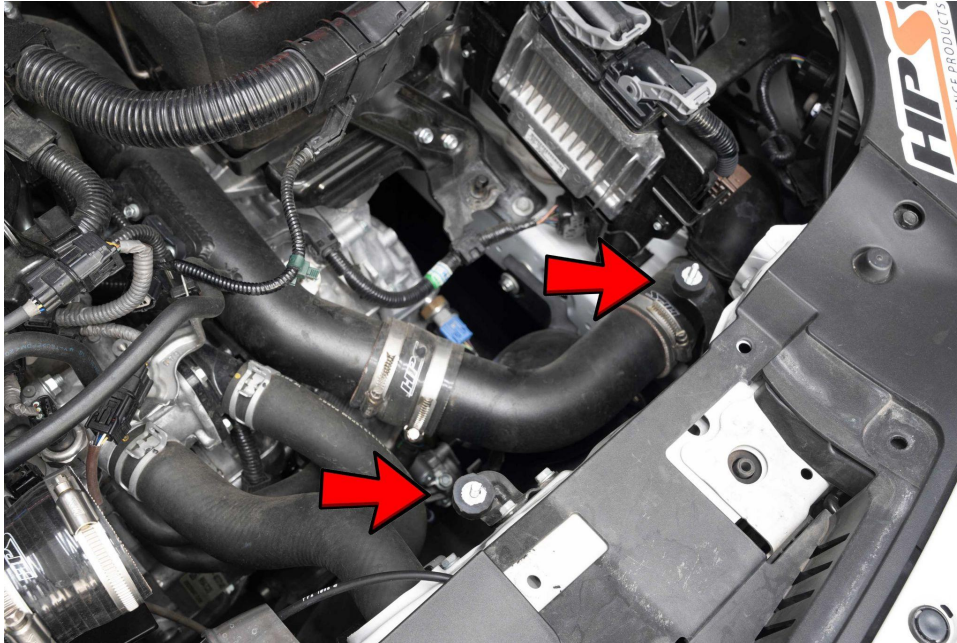
12. Install the provided bubble edge trim onto the HPS heat shield as shown above.



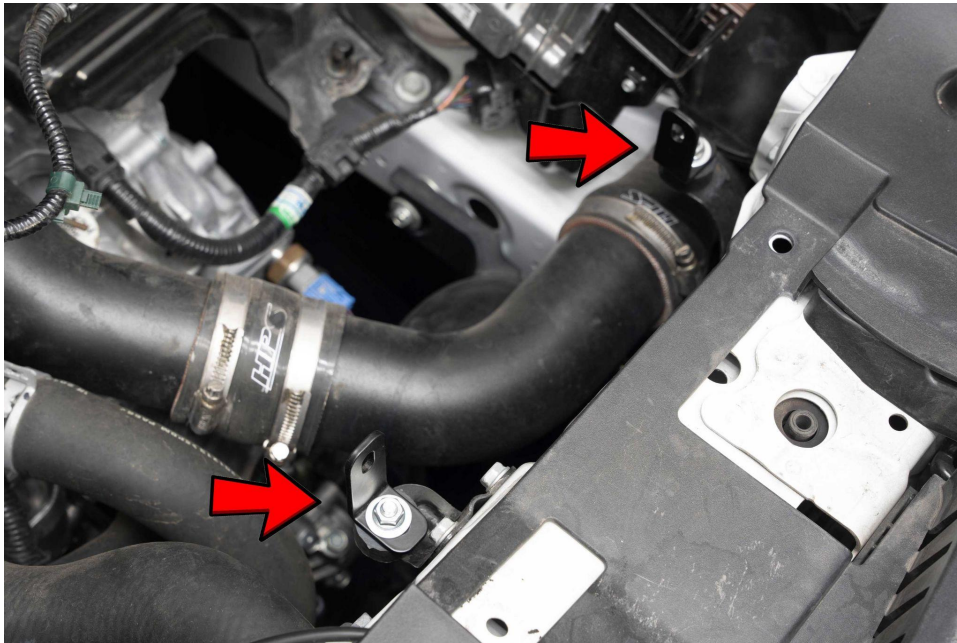
13. Install the thin edge trim onto the HPS heat shield as shown above.



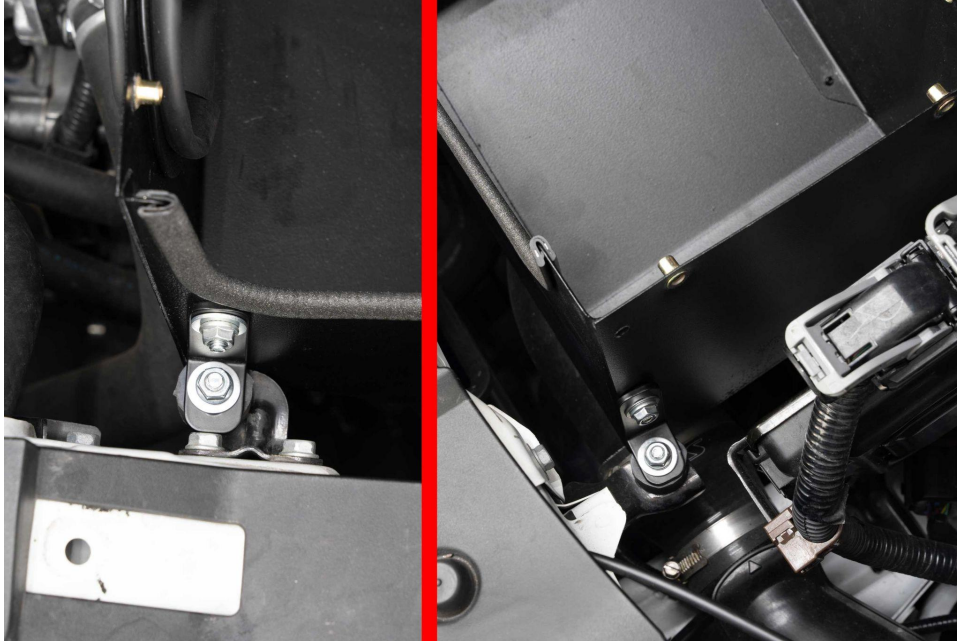
14. Install the reducer coupler along with the provided EMSC clamps onto the turbo inlet housing.



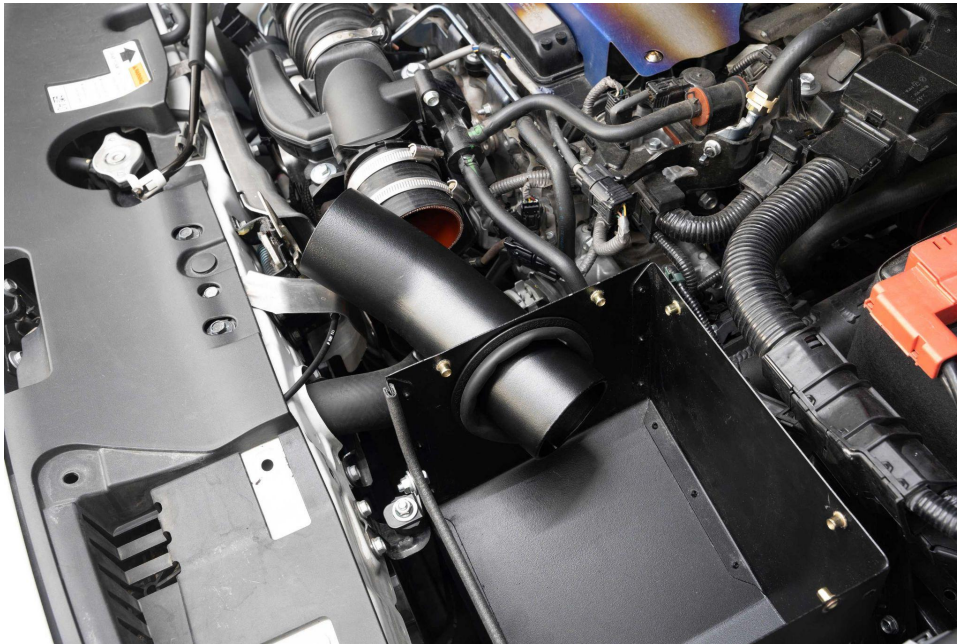
15. Install the provided (2) vibration mounts into the factory air box mounts.



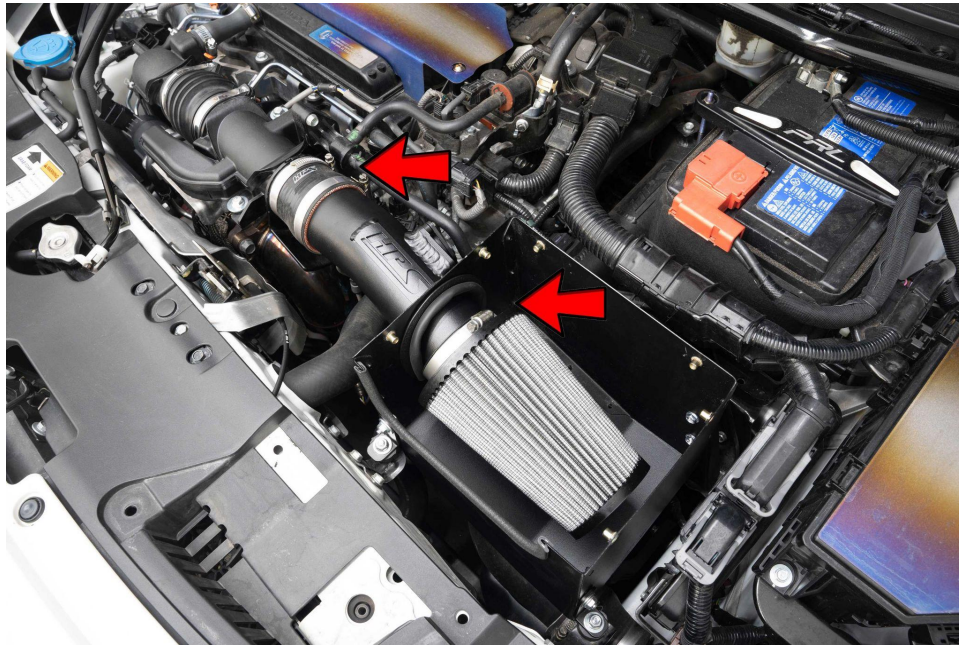
16. Install and loosely secure the (2) "L" brackets using the provided (2) M6 flange nuts and (2) M6 flat washers.



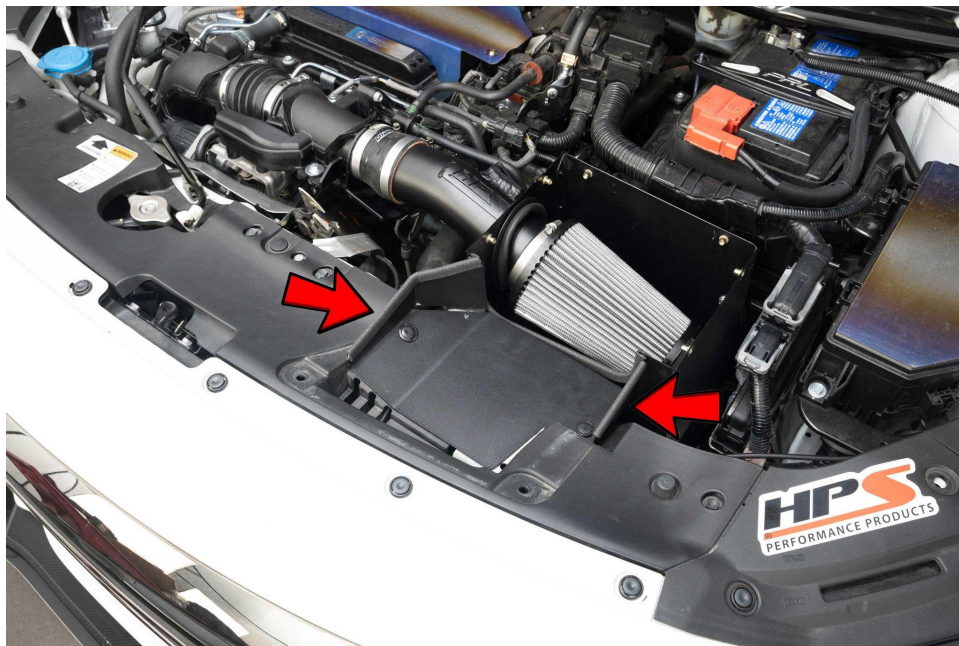
17. Place the HPS heat shield into the vehicle and make sure both "L" brackets are lined up with the heat shield. Secure the brackets to the heat shield using the provided (2) M6 flange nuts, (4) M6 flat washers, and (2) M6 x 16mm bolts.



18. Insert the HPS intake pipe into the heat shield opening, before sliding the intake pipe into the coupler.



19. Install the provided HPS Performance Air Filter. Rotate the intake pipe into position and secure the intake pipe to the coupler.



20. Install the provided thin edge trim onto the HPS air scoop in the areas shown above. Secure the HPS air scoop onto the vehicle using the plastic factory clips removed in step 2.



21. Install and secure the heat shield lid using the provided (5) M5 x 14mm bolts.

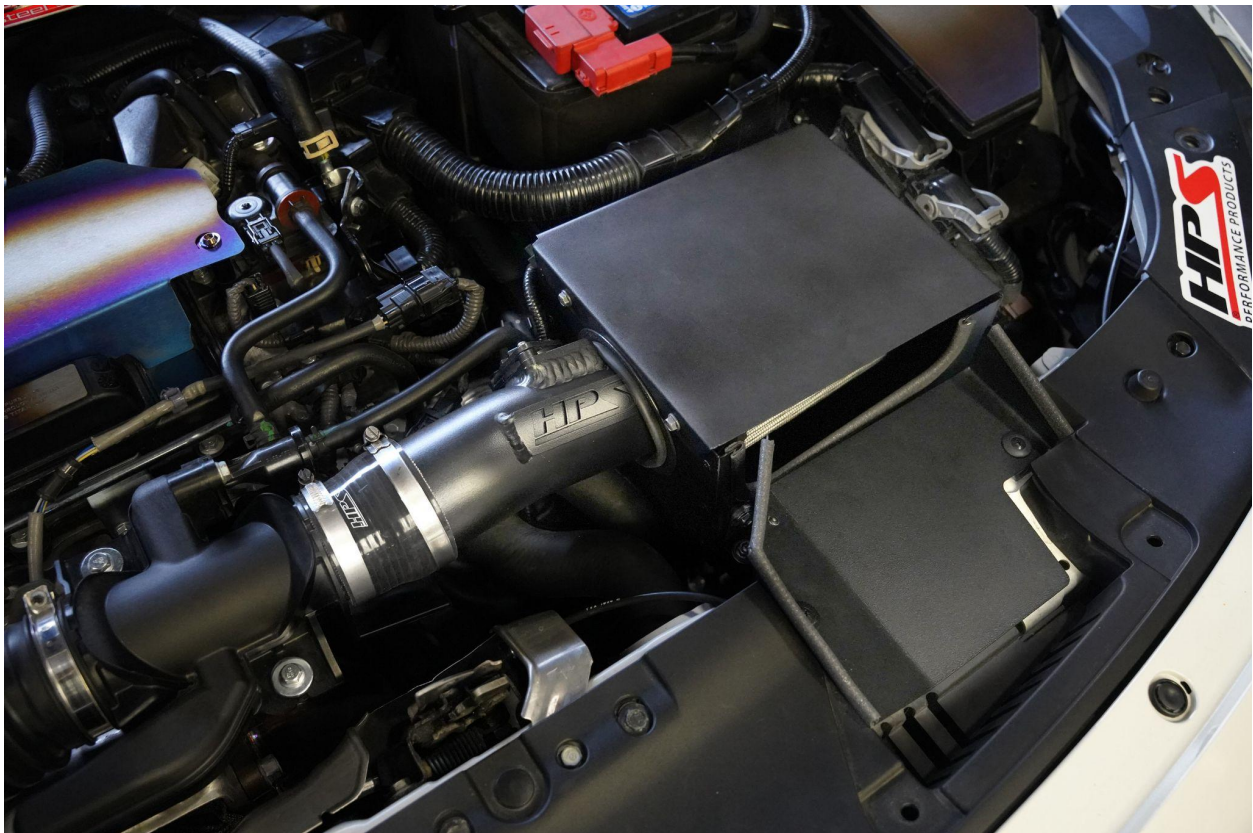
FINAL STEPS

Once the intake has been positioned, tighten all of the clamps and secure all of the parts.

Upon completion of the installation, reconnect the negative battery terminal before you start the engine. Double check to make sure everything is tight and properly positioned before starting the vehicle.

Start the engine. Let the car idle for 3 minutes. Perform a final inspection before driving. Listen carefully for any odd noises, rattles and/or air leaks prior to taking it for a test drive. If any problems arise go back and check any vacuum lines, hoses and clamps that may be causing leaks or rattles and correct the problem.

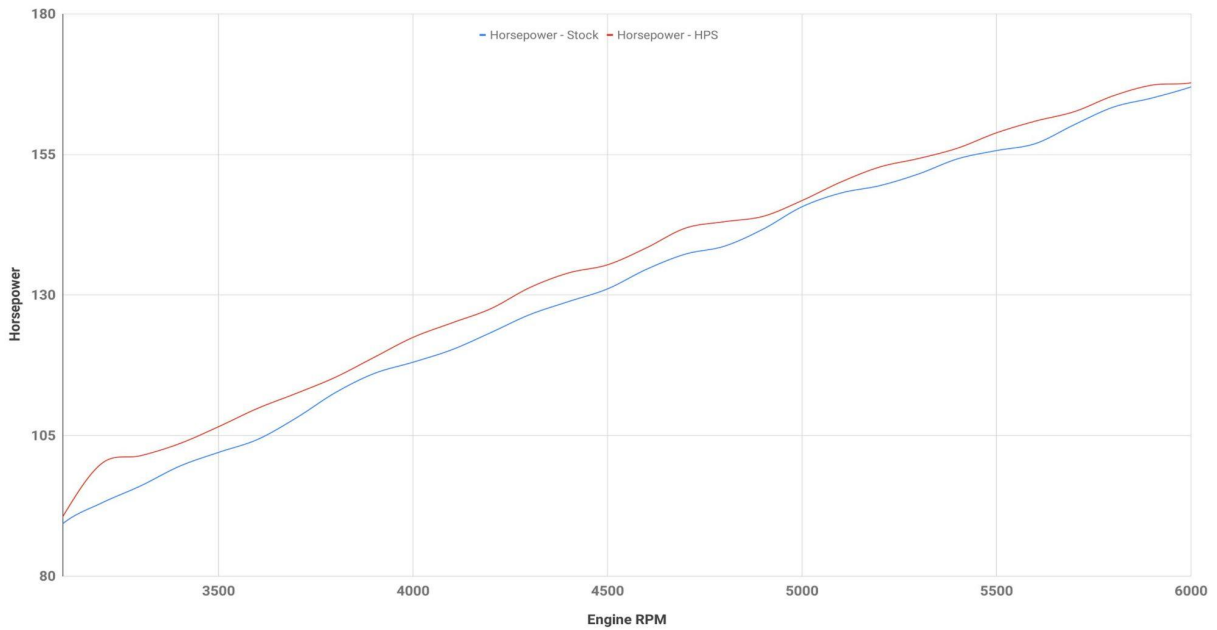
Periodically, recheck the alignment of the intake system and make sure there is proper clearance around and along the length of the intake. Failure to follow proper maintenance procedures may cause damage to the intake and will void the warranty.



HPS Performance Air Intake Kit with Heat Shield (827 Series)
2018-2022 Honda Accord 1.5T Turbo
Part Number: 827-406

Maximum Horsepower Gains = 5.6 whp @ 3600 rpm

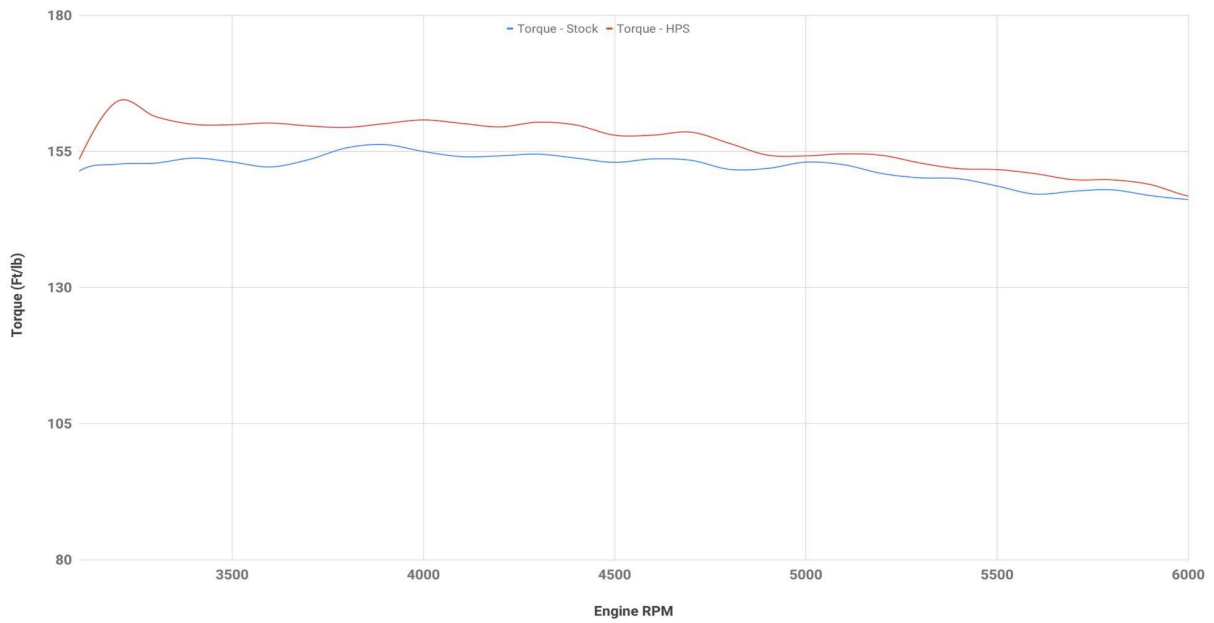
Tested Vehicle: 2019 Honda Accord 1.5T



HPS Performance Air Intake Kit with Heat Shield (827 Series)
2018-2022 Honda Accord 1.5T Turbo
Part Number: 827-406

Maximum Torque Gains = 8.1 ft/lb @ 3600 rpm

Tested Vehicle: 2019 Honda Accord 1.5T



Also available for Honda 2018-2022 Accord 1.5T



HPS Intercooler Charge Pipe Kit

[Part Number 17-134](#)



HPS Performance Front Strut Bar

[Part Number 42-104](#)



HPS Performance Drop-In Air Filter

[Part Number HPS-457349](#)



HPS Performance Drop-In Air Filter

[Part Number MDP-M14x150](#)

Contact an authorized HPS Performance dealer or
visit us at [hpsperformanceproducts.com](https://www.hpsperformanceproducts.com) for more details