



CLUTCHTECH



TSB - TY09

Applicable to vehicles using TB45006 pull type release bearing

Installation Procedure

(1) Install the dished spring washer onto the bearing carrier with the small diameter of the dish touching the lip on the bearing carrier.



(2) Install the flat nylon shim.



(3) Slide the bearing onto the carrier with the rounded contact face for the diaphragm facing toward the transmission.



(4) Push down on the bearing and install the C-Clip



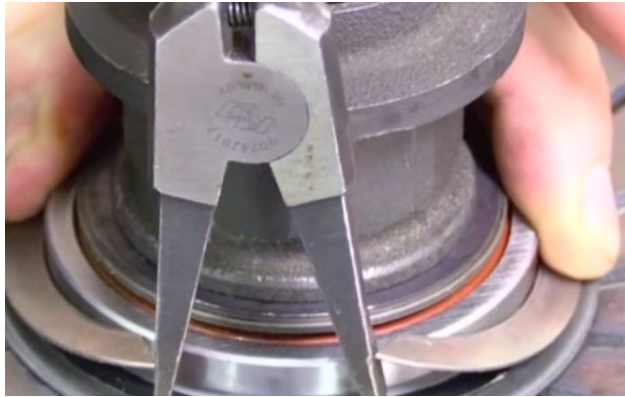
(5) Apply a small amount of high temp bearing grease to the contact surface of the bearing. Prop the bearing carrier up on a block and place the pressure plate over the carrier assembly so the diaphragm is sitting on the bearing.



(6) Install the nylon shim on top of the diaphragm followed by the wave washer.



(7) Using C-clip spreaders install the c clip on the bearing to hold in in place against the diaphragm



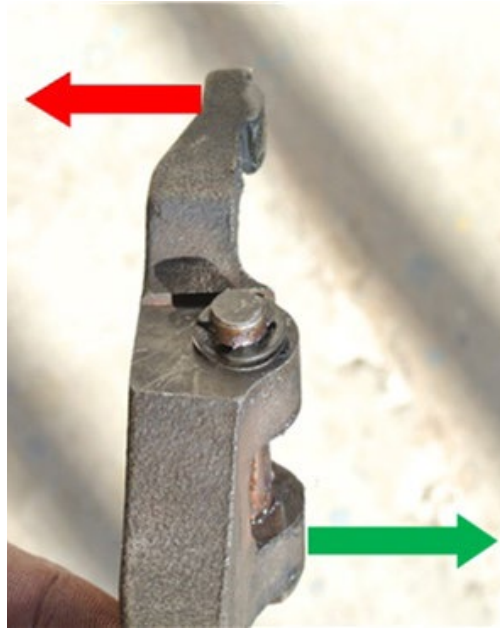
(8) Ensure the transmission is clean and clear of any dirt or old grease. Apply high temperature bearing grease to the nose cone and spline and remove any excess.





(9) Install the pivot pin and c-clip on the fork and take note of the correct orientation of the fork assembly.

TOWARD GEARBOX



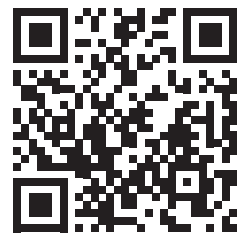
TOWARD ENGINE

(10) With the disc, pressure plate and bearing assembly installed on the engine the transmission can be installed. Once the transmission is installed the fork can be placed through the inspection port on the bellhousing and clipped into place.

NOTE THE IMAGES BELOW ARE FOR ILLUSTRATION PURPOSES ONLY



youtube.com/watch?v=Oo1cD7zIDP8



Scan with a QR app on your smart phone

LEADING BRANDS



australianclutch.com.au

1800 CLUTCH (258824)

