



CLUTCHTECH



TSB-324 Bellhousing Clearance Information

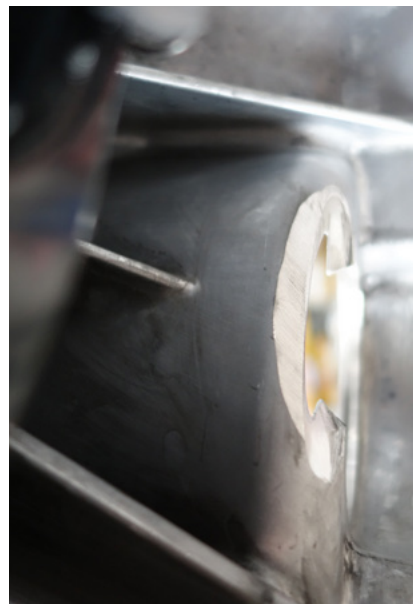
Modification to Starter Pocket in Bellhousing

The 230mm twin plate kit requires modification to the bellhousing to fit some transmissions. Without modification the alloy clutch cover will interfere with the starter pocket of the bellhousing

The starter motor pocket requires chamfering as below to ensure the clearance on the alloy cover. This can be done using a flapper wheel on an angle grinder. The modification will not affect the strength or function of the starter motor and transmission.



Modified chamfer on the starter pocket from inside bellhousing.



Clearance on clutch can be seen from outside the bellhousing.

With the starter pocket modified, mount the transmission to the engine and rotate the engine by hand to ensure the clutch does not foul on the starter pocket.

LEADING BRANDS

