



Warning: Manufactures attempting to duplicate Injen's patented process will now face legal action.

MR Technology Step down process:

- 1- Calibration Method for Air Intake Tracts for Internal Combustion Engines. Covered under Patent# 7,359,795
- 2- Calibration Device for Air Intake Tracts for Internal Combustion Engines. Published and patent pending
- 3- Calibration Method and Device for Air Intake Tracts having Air Fusion Inserts. Published and patent pending

**Part number SP1686
2013 Honda Accord
3.5L V6.**

- 1- 1 pc. cold air intake equipped w/ MR Tech
- 1- 3 1/2" Ea Nanofiber filter (#1021-BB)
- 1- 2 7/8" straight hose (#3050)
- 1- 2 1/2" -12mm vac.hose (#3078)
- 2- Power Band .048/.362 (#4004)
- 2- m6 flange nuts (#6002)
- 2- Fender washers (#6010)
- 1- m6 vibra-mount (#6020)
- 1- Instruction (4 Pages)

Note: All parts and accessories now sold on-line at :
"injenonline.com"

Congratulations! You have just purchased the best engineered, dyno-proven cold air intake system available.

Please check the contents of this box immediately.

Report any defective or missing parts to the Authorized Injen Technology dealer you purchased this product from. Before installing any parts of this system, please read the instructions thoroughly. If you have any questions regarding installation please contact the dealer you purchased this product from. Installation DOES require some mechanical skills. A qualified mechanic is always recommended.

*Do not attempt to install the intake system while the engine is hot. The installation may require removal of radiator fluid line that may be hot.

Injen Technology offers a limited lifetime warranty to the original purchaser against defects in materials and workmanship. Warranty claims must be handled through the dealer from which the item was purchased.

Injen Technology 244 Pioneer Place Pomona, CA 91768 USA

Please check the contents of this box immediately.

Note: This intake system was Dyno-tested with an Injen filter and Injen parts. The use of any other filter or part will void the warranty and CARB exemption number.

Parts and accessories are available on line at "Injenonline.com"

Note: The installation of this cold air intake does require mechanical skills. Removal of the front bumper requires loosening and removing several plastic plugs and screws that may be difficult. In addition to removing the bumper, you will also have to remove the air resonator box, battery and tray when beginning this installation. **Injen strongly recommends that this system be installed by a professional mechanic.**

MR Technology, "The World's First Tuned air Intake System!"

Factory safe air/fuel ratio's for Optimum performance Patent# 7,359,795

Now equipped with "Air Fusion" Patent pending

Note: The C.A.R.B Exempt sticker must be attached under the hood in a manner such that it is easily viewed by an emissions inspector.



Figure 1



Figure 2



Figure 3

Stock air box shown in this picture, disconnect battery before installation.



Figure 4

Front bumper cover needs to be removed from the vehicle for the factory resonator to be removed. Remove the plastic push-clips from top and bottom and remove side screws from the splash guard. Carefully pull back bumper cover. Disconnect Fog lights if equipped.



Figure 5

Lift up and remove the engine cover from the vehicle.



Figure 6

Disconnect the MAF sensor harness and pull the line away from the air box.



Figure 7

Pull the crank case line away from the intake tube

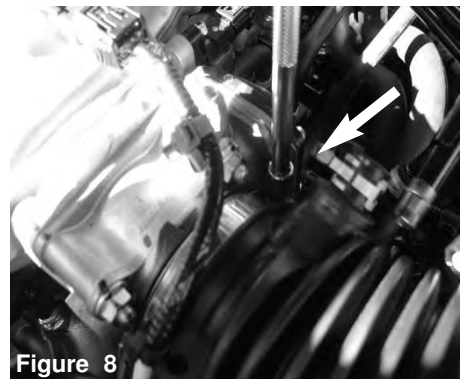


Figure 8

Loosen the clamp on the throttle body using 8mm nut driver.



Figure 9

With 10mm socket and extension, loosen the 2 screws holding in the air box.

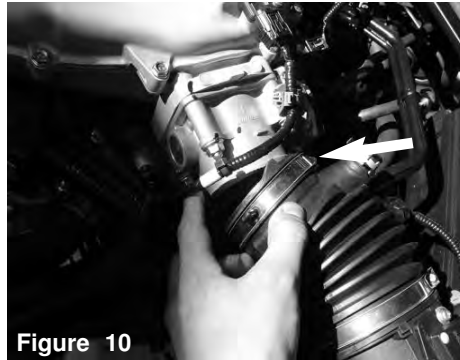


Figure 10

Pull back the intake tube from the throttle body.



Figure 11

Disconnect the harness that is attached to the base of the air box near throttle body. Now lift up and remove the air box from the vehicle.

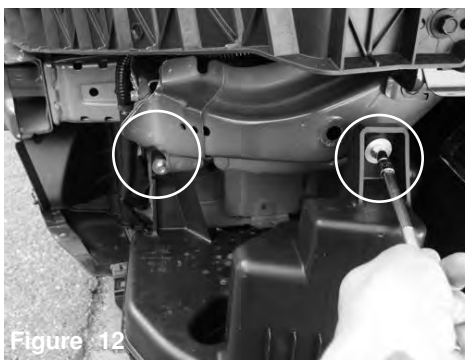


Figure 12

Loosen the 2 bolts holding in the resonator box.

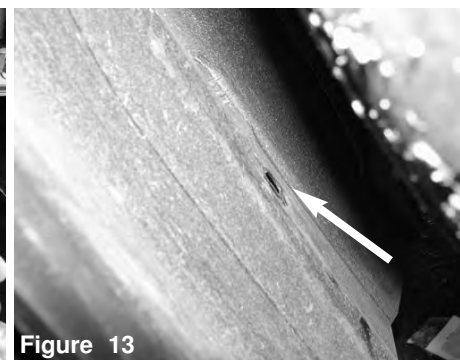


Figure 13

Locate the push clip on the splash guard connected to the resonator box and remove.



Figure 14

Remove the resonator from vehicle, this may require some force to push down and away from vehicle. *Note: there is another attachment located under battery connected to the resonator, disconnect from resonator.*



Figure 15
With clamps provided, install the 2-7/8" hose to the throttle body.

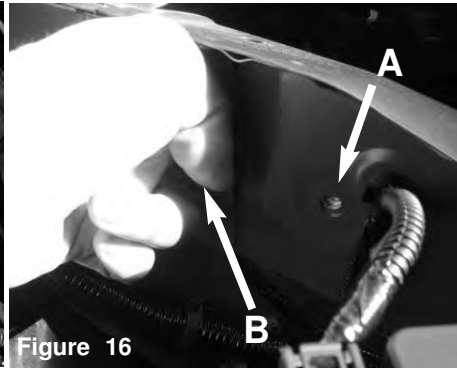


Figure 16
A) Locate the hole on frame next to battery behind headlight B) Now use larger hole to slide inside the washer and M6 nut and line up to hole(see figure 17 for photo of hole).

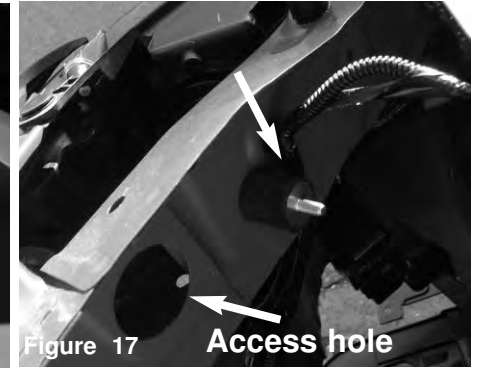


Figure 17 Access hole
Now install the provided M6 vibra mount. Secure and tighten.

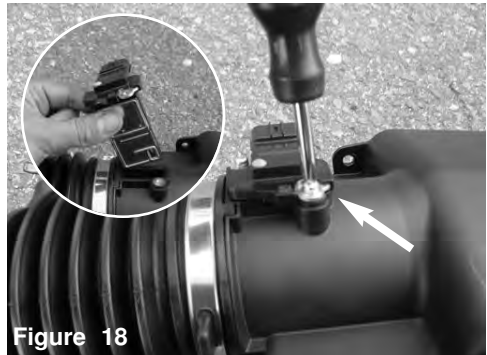


Figure 18
Loosen the 2 screws holding in the MAF sensor using phillips screwdriver and remove the sensor. Save the screws for later install.



Figure 19
Now install the sensor into the intake tube, secure and tighten using factory screws from previous step.



Figure 20
Now install the intake system into the vehicle and position to the throttle body and bracket to the vibra mount.



Figure 21
Position the intake tube to the throttle body. Do not tighten.



Figure 22
Install the filter to the intake tube and tighten using 8mm nut driver.



Figure 23
Secure the bracket using provided fender washer and M6 nut, positon for best fit and clearance and tighten using 10mm wrench.

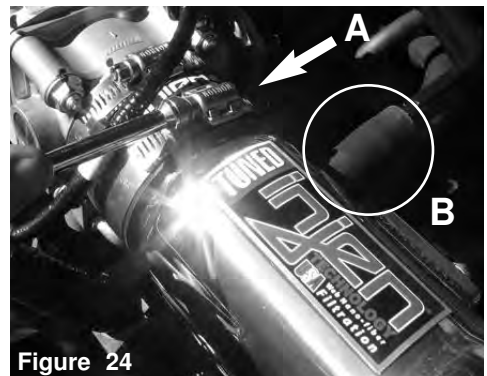


Figure 24
A)Position the intake tube for best fit and clearance. Tighten the clamps using 8mm nut driver. B) With provided 12mm hose, attach to fitting on intake tube to fitting on the crank case hard line.
Page 3 of Part# SP1686



Figure 25
Reconnect the MAF sensor harness.



Figure 26
Install the engine cover.



Figure 69

Align the entire intake for best possible fit. Once you have aligned and made sure that the length of the intake is free from any moving parts, continue to tighten all nuts, bolts and clamps.



Figure 70

Congratulations! You have just completed the installation of this intake system. Periodically, check the alignment of the intake, normal wear and tear can cause nuts and bolts to come loose. **Note: Check clearance and adjust if needed! Failure to check the alignment and adjust the intake can cause damage that will void the warranty. Injen Technology is not responsible for any damages caused by/from improper installation.**

1. Upon completion of the installation, reconnect the negative battery terminal before you start the engine.
2. Align the entire intake system for the best possible fit. Once the intake has been properly fitted continue to tighten all nuts, bolts and clamps.
3. Periodically, recheck the alignment of the intake system and make sure there is proper clearance around and along the length of the intake. Failure to follow proper maintenance procedures may cause damage to the intake and will void the warranty.
4. Start the engine and listen carefully for any odd noises, rattles and/or air leaks prior to taking it for a test drive. If any problems arise go back and check the vacuum lines, hoses and clamps that maybe causing leaks or rattles and correct the problem.
5. Check the filter for excessive dirt build up. Clean or replace the filter with an original Injen filter (can be bought on-line at "injenonline.com"). Congratulations! You have just completed the installation of the best intake system sold on the market. Enjoy the added power and performance of your new intake system.