



Part number SP1331
2011-12 Hyundai Sonata
2011-12 Kia Optima
2.4L 4cyl.

- 1- Cold air intake pipe
- 1- 3.00" High Flow Nano Fiber dry filter(#1049BB)
- 1- 3.00" Straight hose (#3044)
- 2- #48 Clamps (#4004)
- 1- M6 flange nut (#6002)
- 1- Fender washer (#6010)
- 1- M6 Vibra mount (#6020)
- 1- 18"-10mm vacuum hose (#3077)
- 1- 11"-12mm vacuum hose (#3078)
- 1- 3/8 Vacuum cap (Manual Transmission only) (#8005)
- 1- 4- page instruction

Note: All parts and accessories are sold on-line at **"injenonline.com"**

Congratulations! You have just purchased the best engineered, dyno-proven air intake system available.

Please check the contents of this box immediately.

Report any defective or missing parts to the Authorized Injen Technology dealer you purchased this product from. Before installing any parts of this system, please read the instructions thoroughly. If you have any questions regarding installation please contact the dealer you purchased this product from.

Installation DOES require some mechanical skills. A qualified mechanic is always recommended.

*Do not attempt to install the intake system while the engine is hot. The installation may require removal of radiator fluid line that may be hot.

Injen Technology offers a limited lifetime warranty to the original purchaser against defects in materials and workmanship. Warranty claims must be handled through the dealer from which the item was purchased.

Injen Technology 244 Pioneer Place Pomona, CA 91768 USA

Please check the contents of this box immediately.

Note: This intake system was Dyno-tested with an Injen filter and Injen parts the use of any other filter or part will void the warranty and CARB exemption number.

Parts and accessories are available on line at **"Injenonline.com"**

Note: The installation of this cold air intake does require mechanical skills. **Removal of the front bumper requires loosening and removing several plastic plugs and screws that may be difficult.** It is recommended that this system be installed by a professional mechanic. Be sure to disconnect the negative terminal before proceeding.

Congratulations! You have just purchased the worlds first tuned intake system.

MR Technology, Leading the way!

"The Worlds First Tuned Air Intake System"™



Figure 1



Figure 2



Figure 3
Stock OEM intake system.



Figure 4
Lift up firmly on the engine cover and remove the engine cover from the engine bay.



Figure 5
Figure A: Use a phillips screw driver and remove the two plastic retaining screws on the front vent duct.
Figure B: This air duct will be removed.

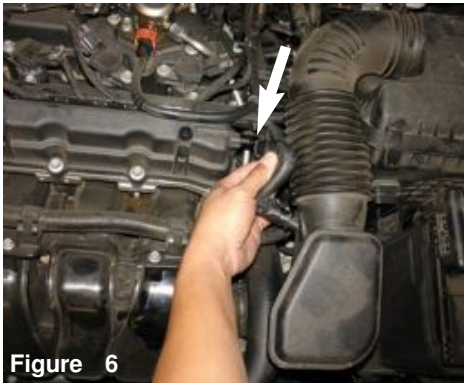


Figure 6
Use a plier to release the pressure clamp on the crank case vent tube on the OEM air duct. Disconnect the crank case vent tube from the vavle cover.



Figure 7
Use a plier to release the pressure clamp on the brake booster vent tube and then disconnect the booster vent tube from the air duct. **NOTE:** Manual models will not have this vacuum line.



Figure 8
Use a 10mm socket and ratchet and loosen the clamp on the air duct on the throttle body.

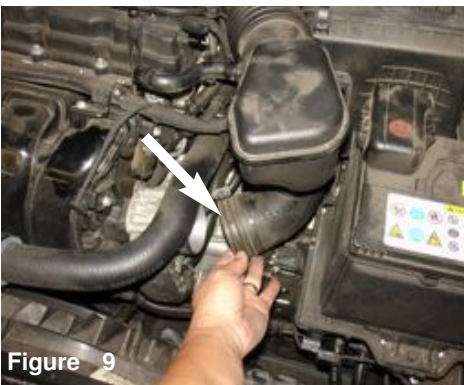


Figure 9
Pull the air duct from the throttle body



Figure 10
Use a 10mm socket and 3/8" ratchet and extension and loosen the two 10mm bolts attached to the front of the OEM air box assembly



Figure 11
Firmly lift up on the OEM air box assembly and remove the entire air box assembly from the engine bay.

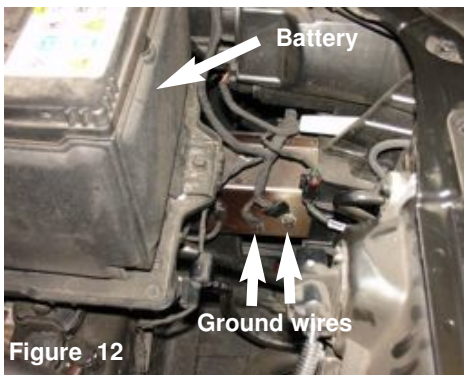


Figure 12
Locate the two ground wires located on the chassis in front of the battery, underneath the drivers side headlight. Use the battery in the photo for reference to locate the ground wires.

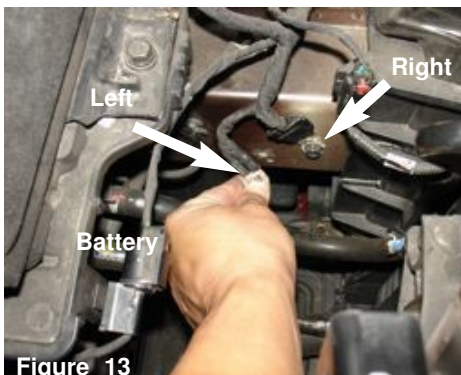


Figure 13
Use a 10mm socket & ratchet and remove the two grounding bolts from both ground wires . You will take the left ground wire and combine it with the right ground wire.



Figure 14
Both wires shown grounded together



Figure 15

Now screw the supplied Vibramount onto the thread hole where the left ground wire once was from figure 13.

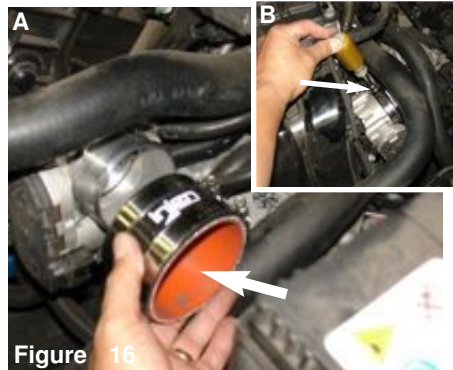


Figure 16

Figure A: Place the 3.0" straight hose and two #48 clamps onto the throttle body. **Figure B:** Use a 8mm nut driver and secure only the clamp on the throttle body side only for now.



Figure 17

Place the Injen Intake pipe through the chassis in between the battery and headlight in the engine bay. Make sure the end with the two welded nipples are in the engine bay. **NOTE:** Make sure the pipe goes in between the two coolant lines going to the radiator.

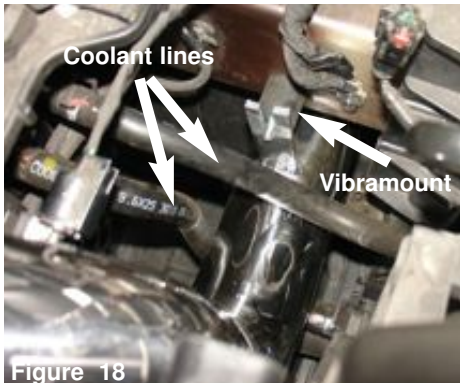


Figure 18

The two coolant lines shown with pipe going in between them. Also, line up the intake bracket to the vibramount on the chassis from figure 15.

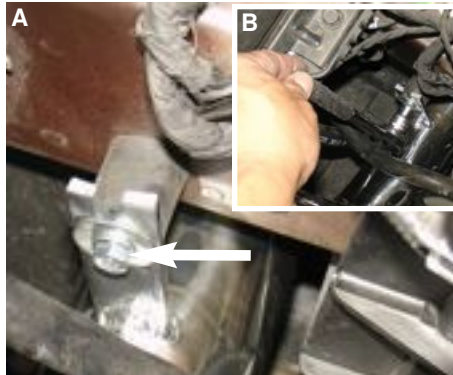


Figure A: Place a M6 nut and a fender washer onto the threaded stud on the vibramount. **Figure B:** Use a ratchet and 10mm socket and tighten the M6 nut to secure the intake bracket to the vibramount



Figure 20

Adjust the intake pipe for best possible fitment and then secure the clamp on the throttle body pipe side

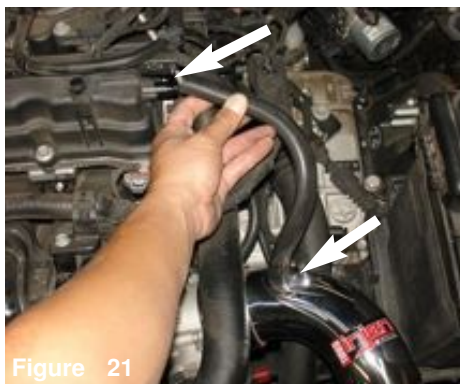


Figure 21

Place the 11"-12mm vacuum hose on the 1/2" welded nipple on the intake pipe and the crank case vent port on the valve cover.

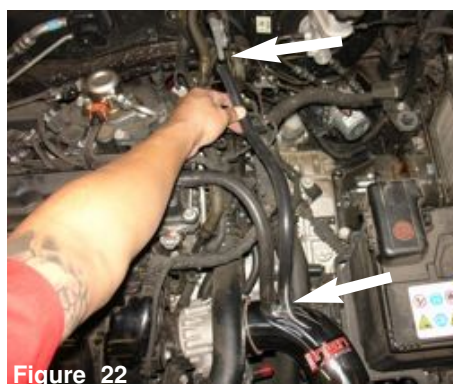


Figure 22

Automatics only: Place the 18"-10mm vacuum line to the 3/8" welded nipple on the intake pipe and the brake booster vent tube. **Manual transmission:** Place the supplied 3/8 Vacuum cap onto the 3/8 nipple



Figure 23

Use a phillips screw drive and remove the two screws located under the driver side fog light. Pull the plastic panel back and then place the filter onto the intake pipe. Use a 8mm nut driver to secure the filter clamp.



Figure 24

Reinstall the engine cover. Your intake installation is now complete. Go over all your clamps and fittings to make sure they are snug. Check the clearance on the pipe and make sure it does not make contact with any components in the engine bay.



Figure 25

Congratulations! You have just completed the installation of the World's first tuned intake system. Periodically, check the system for fitment, this will enhance the life of your Injen SP system, failure to do so will void the warranty.

1. Upon completion of the installation, reconnect the negative battery terminal before you start the engine.
2. Align the entire intake system for the best possible fit. Once the intake has been properly fitted continue to tighten all nuts, bolts and clamps.
3. Periodically, recheck the alignment of the intake system and make sure there is proper clearance around and along the length of the intake. Failure to follow proper maintenance procedures may cause damage to the intake and will void the warranty.
4. Start the engine and listen carefully for any odd noises, rattles and/or air leaks prior to taking it for a test drive. If any problems arise go back and check the vacuum lines, hoses and clamps that maybe causing leaks or rattles and correct the problem.
5. Check the filter for excessive dirt build up. Clean or replace the filter with an original Injen filter (can be bought on-line at "injenonline.com"). Congratulations! You have just completed the installation of the best intake system sold on the market. Enjoy the added power and performance of your new intake system.