

**2019+ MK4 Ford Focus ST Installation Instructions**

**DOES NOT FIT USDM FORD FOCUS MODELS**

View instructions and photos online

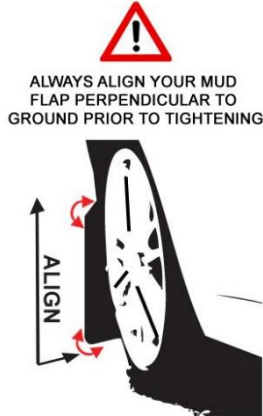
**CARE AFTER INSTALLATION** Once installed, vehicle owner is responsible for condition of mud flaps and all costs associated with replacing damaged or lost parts. Warranty covers manufacturer defect on new, never installed parts.

⚠ Watch for blind spots when parking ⚠ Avoid contact with curbs and objects that compress flaps with excessive force. Check wheel clearances, especially on vehicles equipped with aftermarket wheels and suspensions.

QUESTION ON INSTALLATION? CONTACT [www.rallyarmor.com/support](http://www.rallyarmor.com/support)

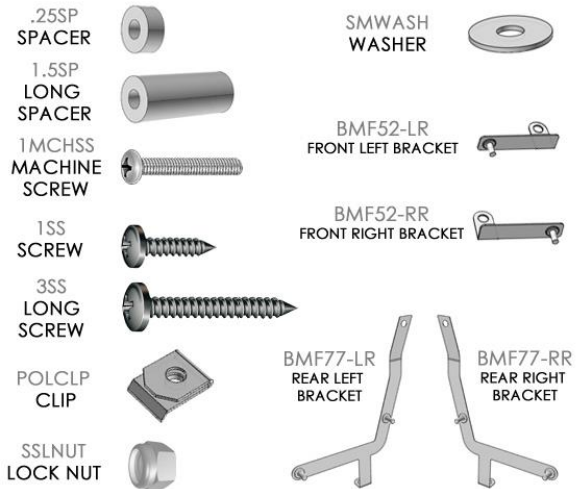
NEED TO PURCHASE REPLACEMENT PARTS? SEND RECEIPT OR PHOTO OF MUD FLAPS TO [www.rallyarmor.com/support](http://www.rallyarmor.com/support)

**IMPORTANT NOTES**



**INSTALLATION KIT CONTENTS**

QUANTITY	PART	ITEM ID
2	SPACER	.25SP
2	MACHINE SCREW	1MCHSS
4	SCREW	1SS
2	LONG SPACER	1.5SP
2	LONG SCREW	3SS
6	CLIP	POLCLP
8	LOCK NUT	SSLNUT
14	WASHER	SMWASH
1	FRONT LEFT BRACKET	BMF52-LR
1	FRONT RIGHT BRACKET	BMF52-RR
1	REAR LEFT BRACKET	BMF77-LR
1	REAR RIGHT BRACKET	BMF77-RR



**Recommended Tools** Drill, low-profile offset or ratcheting screwdriver, 7/16<sup>th</sup> wrench, flathead screwdriver.

**Important Tips** Installation should be done on even surface. Do not use drill to tighten hardware. Hand tools only. Avoid overtightening.

**RALLY ARMOR - A BIT ABOUT OUR STANDARD IN MUD FLAPS**

Rally Armor mud flaps are fabricated from a high grade polyurethane plastic that is rigorously reviewed for quality and consistency. As with all manufacturing processes, controlled conditions and multiple QC checkpoints minimize major irregularities, however certain very minor surface layer marks appear periodically. These are visual variations that do not affect construction nor do they impede the performance of the flaps. Most matte away as the material ages naturally with continued exposure to the outdoors. Each flap is unique in appearance yet all are equally structurally sound.

## 2019+ MK4 Ford Focus ST Installation Instructions

**DOES NOT FIT USDM FORD FOCUS MODELS**

### FRONT MUD FLAP

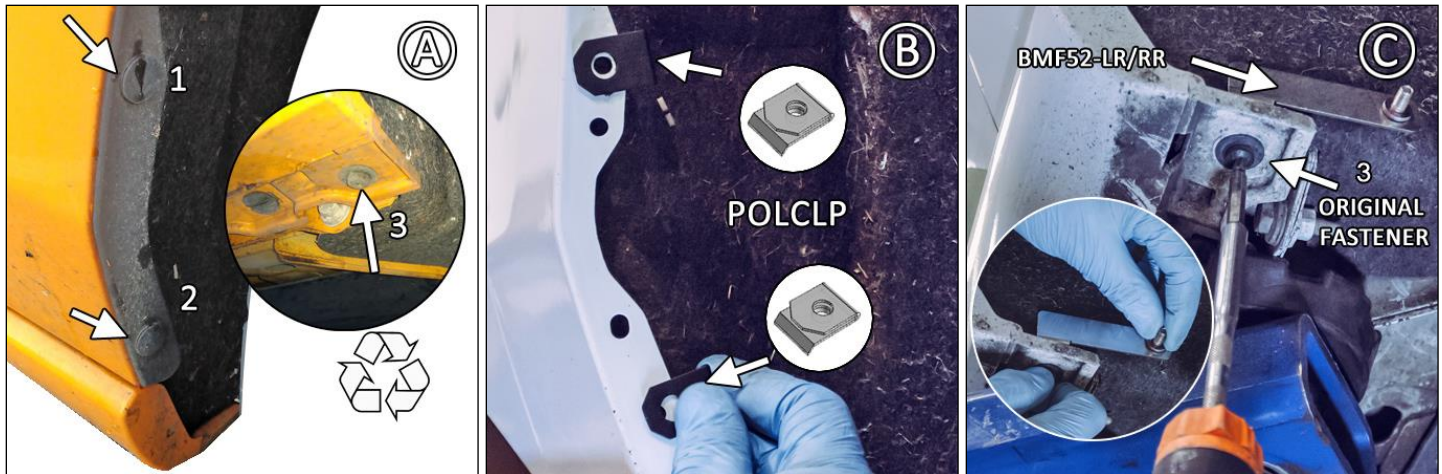
**Bracket & Hardware 1 x Front Flap → 1 x BMF52-LR/RR; 2 x 1SS; 2 x POLCLP; 3 x SMWASH; 1 x SSLNUT**

Turn the steering wheel towards the side you are working on to gain access to the inner wheel well area.

**FIGURE A** Remove factory liner fasteners 1, 2, 3, keeping 3 for reinstallation. Pull liner away from fender.

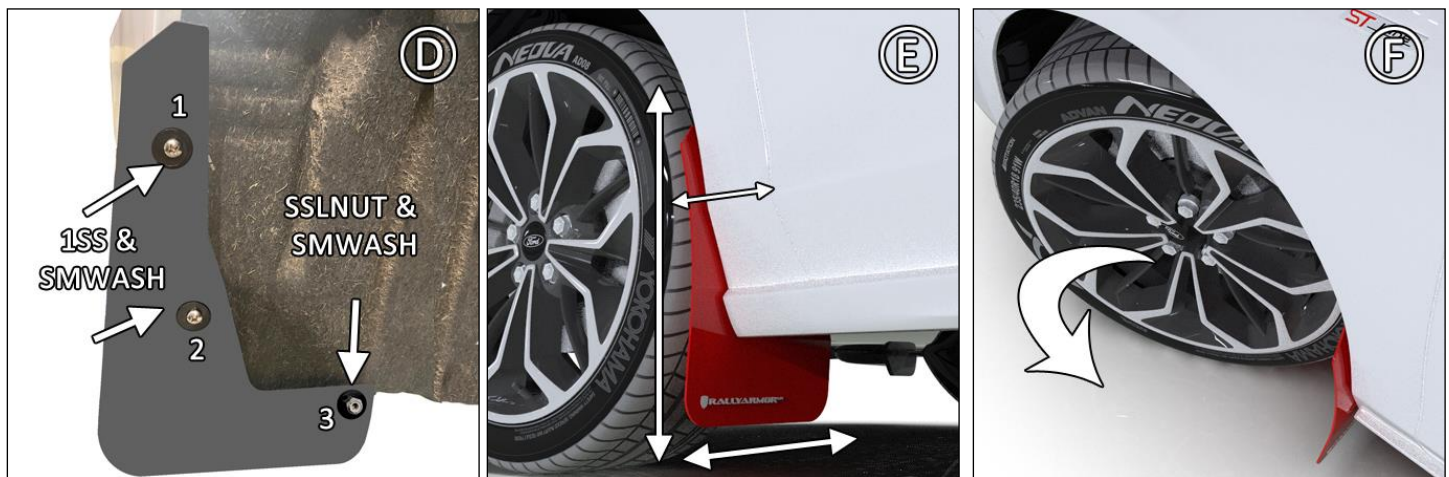
**FIGURE B** Install POLCLP over upper and lower fender mounting points 1 and 2. Reinstall liner.

**FIGURE C** Mount front bracket BMF52-LR/RR using original fastener.



**FIGURE D** Position mud flap logo-side facing rear of vehicle against mounting points on liner and bracket. Use 1SS and SMWASH to fasten points 1 & 2. SSLNUT and SMWASH for point 3.

**FIGURE E/F** Ensure mud flap is parallel to even ground. Check tire clearance. Hand tighten only until washers are seated against flap. Adjust as needed.



### REAR MUD FLAP

**Bracket & Hardware 1 x Rear Flap → BM77-LR/RR; 1 x .25SP; 1 x 1MCHSS; 1 x 1.5SP; 1 x 3SS; 1 x POLCLP; 4 x SMWASH; 3 x SSLNUT**

**FIGURE G** Remove factory liner fastener.

**FIGURE H/I** Drill out the lower factory liner rivet. Move liner away then install POLCLP in its place.

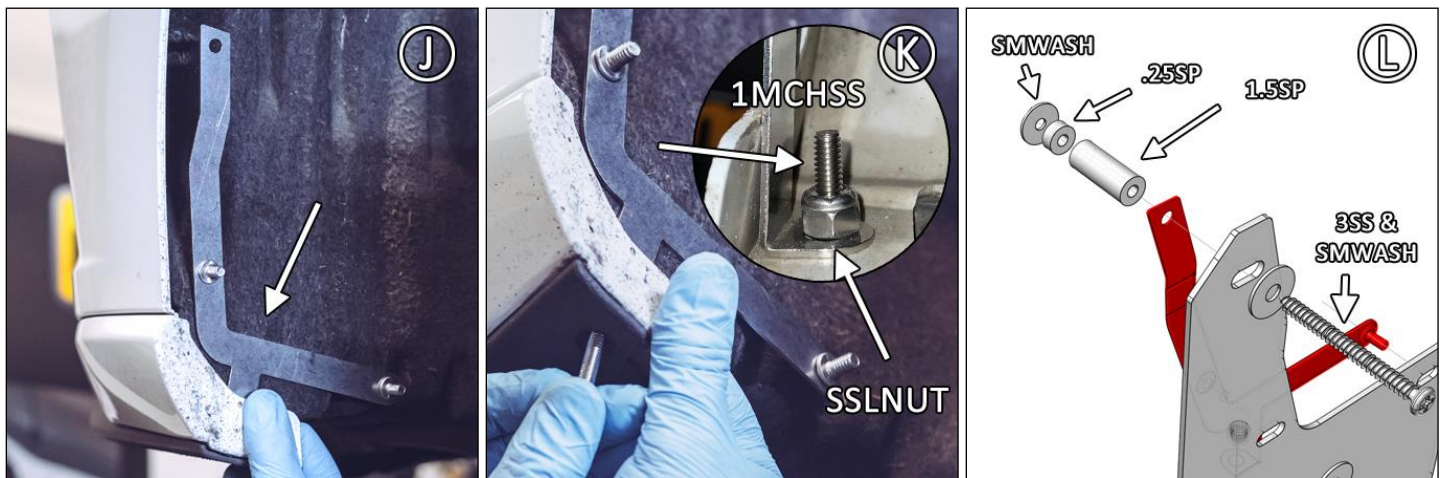
**2019+ MK4 Ford Focus ST Installation Instructions**

**DOES NOT FIT USDM FORD FOCUS MODELS**



**FIGURE J/K** Install lower mounting point of rear bracket BMF77-LR/RR with 1MCHSS and SSLNUT.

**FIGURE L** Positioning bracket behind mud flap against liner, fasten topmost point with 3SS, SMWASH, 1.5SP, .25SP, SMWASH.



**2019+ MK4 Ford Focus ST Installation Instructions****DOES NOT FIT USDM FORD FOCUS MODELS****FIGURE M/N** Not fully tightening, fasten lower mounting points 2 and 3 with SSLNUT & SMWASH.**FIGURE O** Adjust mud flap parallel to even ground. Hand tighten only until washers seated against flap. **Adjust as needed.**

# IMF77



## 2019+ MK4 Ford Focus ST Installation Instructions

**DOES NOT FIT USDM FORD FOCUS MODELS**

