

## 2017+ Tesla Model 3 Mud Flap Installation Instructions

View instructions and photos online [www.rallyarmor.com](http://www.rallyarmor.com)

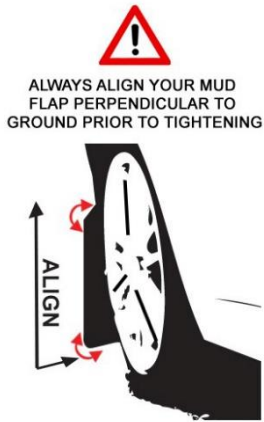
**CARE AFTER INSTALLATION** Once installed, the vehicle owner is responsible for the condition of the mud flaps and all costs associated with replacing damaged or lost parts. Warranty covers manufacturer defect on new, never installed parts.

⚠ Watch for blind spots when parking ⚠ Avoid contact with curbs, bumps and objects that can compress the flaps with excessive force. Be sure to check wheel clearances, especially on vehicles equipped with aftermarket wheels and suspensions.

QUESTION ON INSTALLATION? CONTACT US ONLINE [www.rallyarmor.com/support](http://www.rallyarmor.com/support)

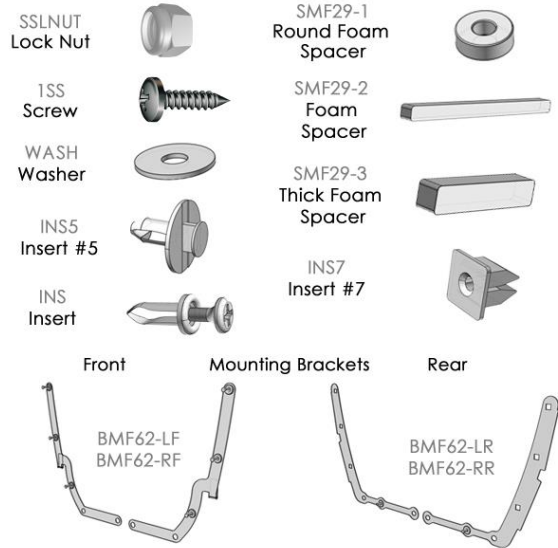
NEED TO PURCHASE REPLACEMENT PARTS? SEND RECEIPT OR PHOTO OF RALLY ARMOR LOGO ON FLAPS TO US [www.rallyarmor.com/support](http://www.rallyarmor.com/support)

### IMPORTANT NOTES



### INSTALLATION KIT CONTENTS

QUANTITY	PART	ITEM ID
8	STAINLESS STEEL LOCK NUT	SSLNUT
14	STAINLESS STEEL SCREW	1SS
22	WASHER	WASH
4	INSERT	INS
4	INSERT #5	INS5
6	INSERT #7	INS7
6	ROUND FOAM SPACER	SMF29-1
6	FOAM SPACER	SMF29-2
6	THICK FOAM SPACER	SMF29-3
1	MOUNTING BRACKET LEFT FRONT	BMF62-LF
1	MOUNTING BRACKET RIGHT FRONT	BMF62-RF
1	MOUNTING BRACKET LEFT REAR	BMF62-LR
1	MOUNTING BRACKET RIGHT REAR	BMF62-RR



**Recommended Tools** Low-profile offset or ratcheting screw driver, 7/16<sup>th</sup> wrench, flathead screwdriver, plier.

**Important Tips** Installation should be done on an even surface. Do not use power tools to tighten hardware. Hand tools only. Avoid overtightening.

### RALLY ARMOR - A BIT ABOUT OUR STANDARD IN MUD FLAPS

Rally Armor mud flaps are fabricated from a high grade polyurethane plastic that is rigorously reviewed for quality and consistency. As with all manufacturing processes, controlled conditions and multiple QC checkpoints minimize major irregularities, however certain very minor surface layer marks appear periodically. These are visual variations that do not affect construction nor do they impede the performance of the flaps. Most matte away as the material ages naturally with continued exposure to the outdoors. Each flap is unique in appearance yet all are equally structurally sound.

## 2017+ Tesla Model 3 Mud Flap Installation Instructions

### FRONT MUD FLAP

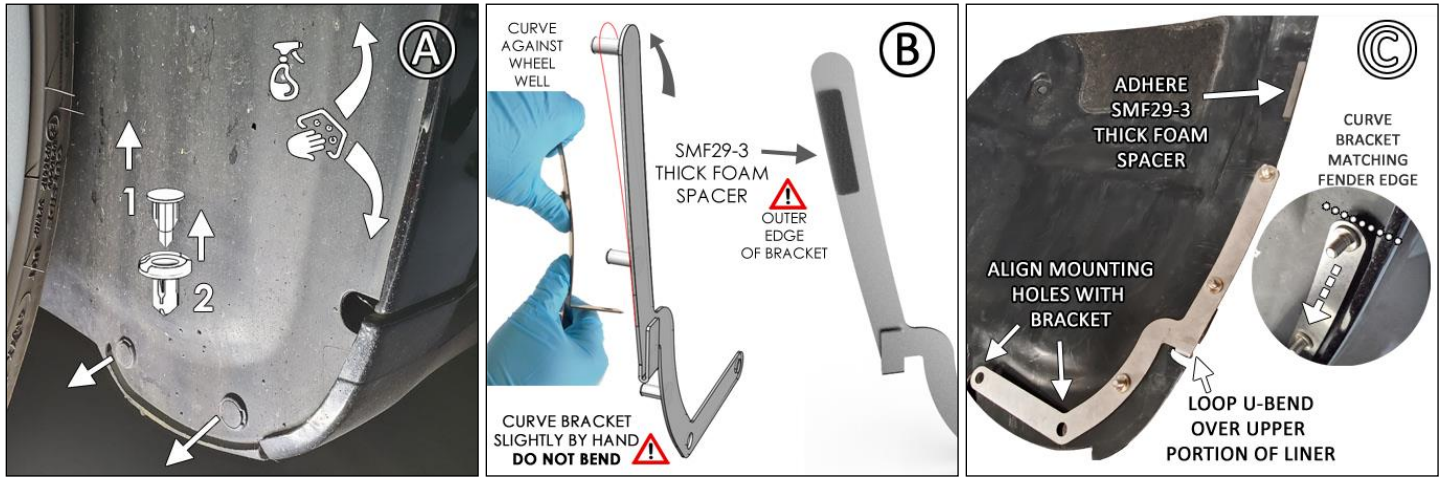
**Bracket & Hardware 1 x Front Flap → 1 x BMF62-LF /RF; 1 x SMF29-2; 2 x SMF29-3; 5 x WASH; 3 x SSLNUT; 2 x INS5; 2 x 1SS**

Turn the steering wheel towards the side you are working on to gain access to the inner wheel well area.

**FIGURE A** Clean the wheel well liner then remove the 2 lower fasteners. Coax the liner away from edge of the fender.

**FIGURE B** Gently curve upper section MOUNTING BRACKET BMF62-LF/RF so it nests flush against liner. Adhere a THICK FOAM SPACER SMF29-3 on flat section of bracket, the side without stainless studs.

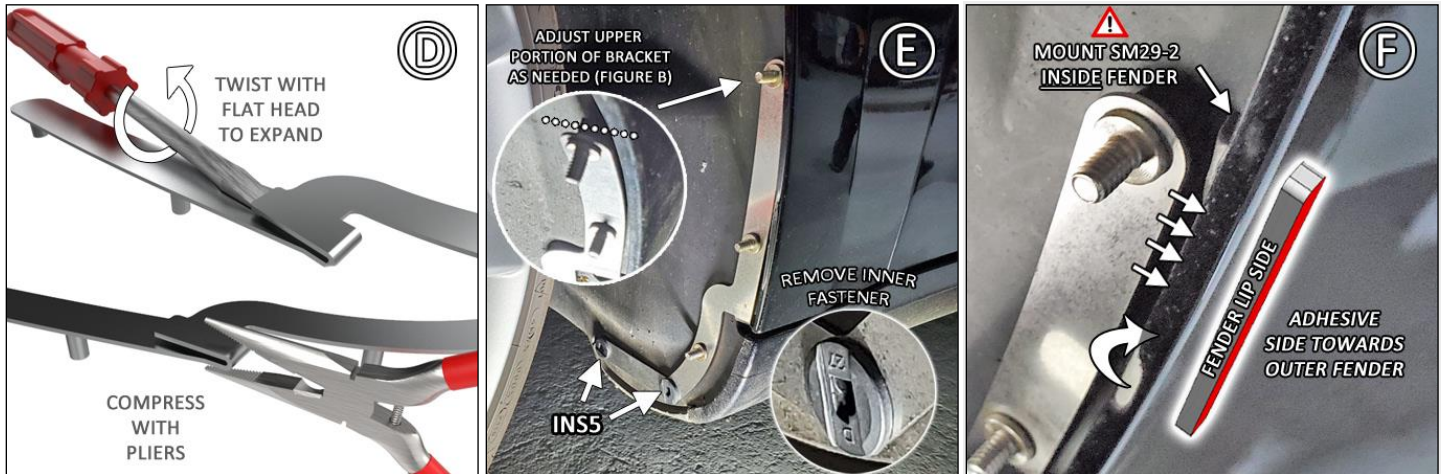
**FIGURE C** Place FRONT BRACKET against wheel well, sliding rear U-bend tab over the upper cut-out of fender liner. It should seat firm with room for slight adjustment. Adhere THICK FOAM SPACER on upper portion of liner, at the edge of the fender. The spacer will set the liner back into the fender. Curve the upper portion of the bracket as needed.



**FIGURE D** U-bend can be adjusted incrementally with pliers by opening or compressing it with a flat head screwdriver.

**FIGURE E** Replace the liner back into the fender with the bracket assembly affixed. Remove and discard interior expansion pieces from all INS5 INSERT #5. Place 2 INS5 through lower bracket into factory Tesla 3 mounting points.

**FIGURE F** Place a FOAM SPACER SMF29-2 inside fender area, the adhesive side on the exterior fender side, facing MOUNTING BRACKET.



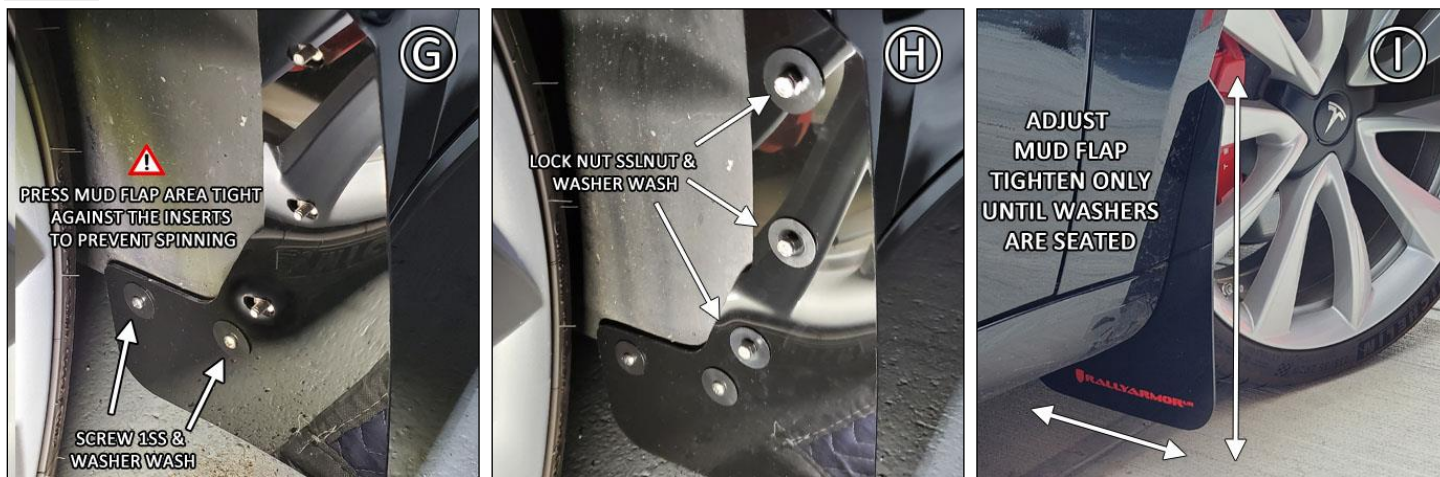
**FIGURE G** Logo-side of flap faces rear of vehicle against the corresponding mounting points onto BRACKET and fender. Install 2 STAINLESS STEEL SCREW 1SS with WASHER WASH onto upper respective mounting points. Press mud flap firmly against INSERT #5 to prevent spinning. **Do not tighten completely.**

**FIGURE H** Install upper and lower STAINLESS STEEL LOCK NUT SSLNUT and WASHER through the mounting points on the mud flaps.

## 2017+ Tesla Model 3 Mud Flap Installation Instructions

Leave the application loosely mounted to allow for adjustment later.

**FIGURE I** Ensure mud flap is parallel to even ground. Hand tighten washers until seated against flap. **Adjust as needed.**



### REAR MUD FLAP

**Bracket & Hardware 1 x Rear Flap** → 1 x BMF62-LR/RR; 1 X SSLNUT; 6 x WASH; 5 x 1SS; 3 x SMF29-1; 2 x SMF29-2; 1 x SMF29-3  
2 x INS; 3 x INS7

**FIGURE J** Remove the 2 rear factory wheel well fasteners.

**FIGURE K** Remove and discard inner fastener from all INSERTS INS. Install INS into existing mounting points until seated against liner.

**FIGURE L** Gently curve MOUNTING BRACKET BMF62-LR/RR so it follows shape of wheel liner. Check fitment by placing against the liner and adjust as needed.

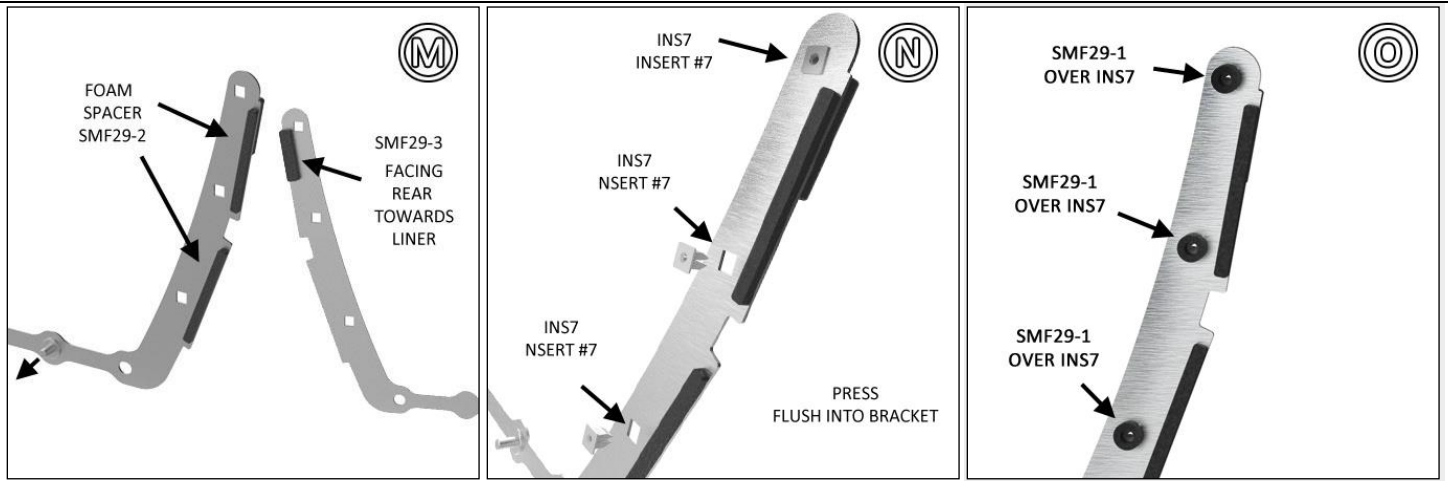


**FIGURE M** Adhere a THICK FOAM SPACER SMF29-3 on flat side, upper end of BRACKET. On stainless stud side, adhere two FOAM SPACER SMF29-2 next to square mounts as shown.

**FIGURE N** Install 3 INSERT #7 into each of the mounting squares onto BRACKET until flush.

**FIGURE O** Adhere 3 ROUND FOAM SPACER over each of the 3 INSERT #7.

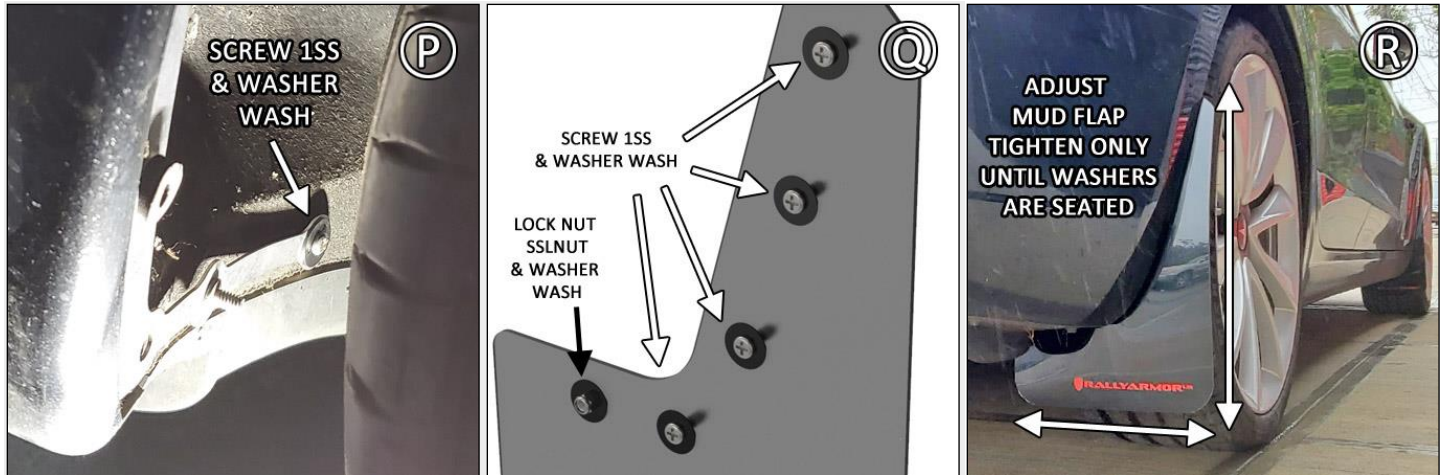
**2017+ Tesla Model 3 Mud Flap Installation Instructions**



**FIGURE P** Position BRACKET against liner lower mounting points. Thread innermost mount with a SCREW 1SS and WASHER.

**FIGURE Q** Place mud flap logo-side facing the rear of vehicle against BRACKET mounting points on fender. Install 2 SCREW 1SS with WASHER onto both mounting points. Press mud flap flush against INSERT #7 to prevent spinning. Tighten until flush.

**FIGURE R** Adjust mud flap until parallel to even ground. Hand tighten until washers are seated. **Avoid over-tensioning mounts.**

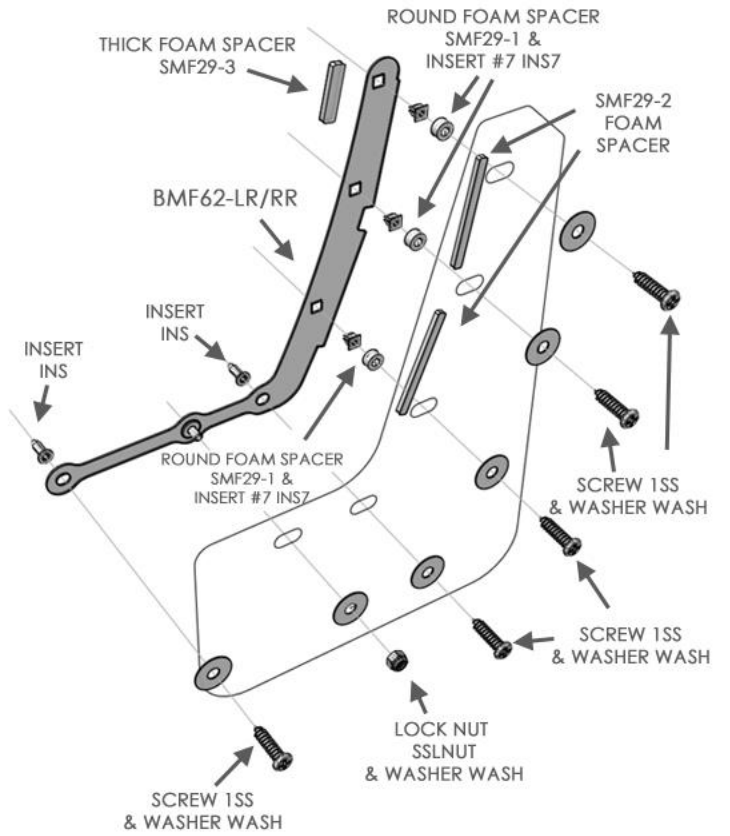
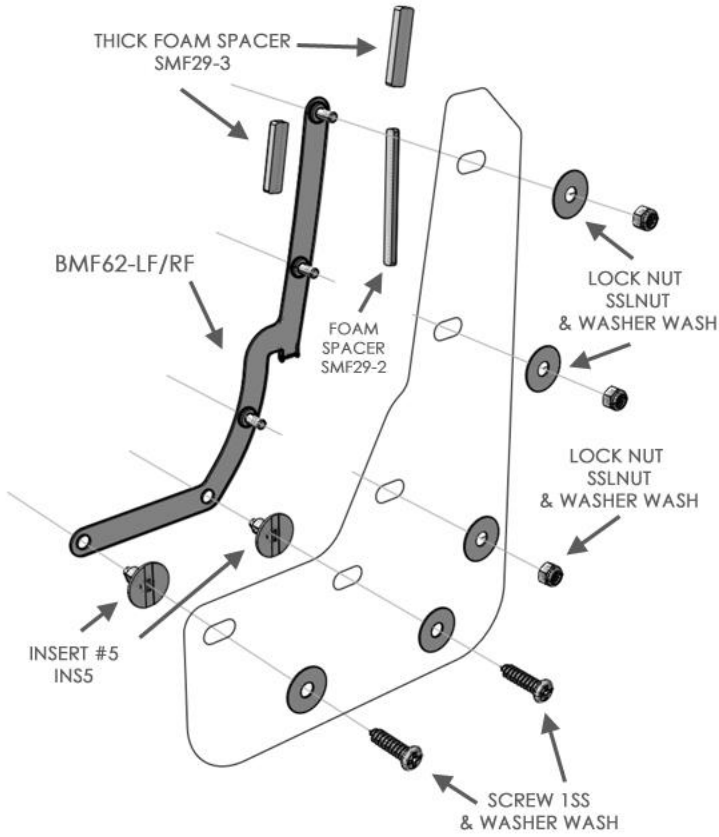


# IMF62



## 2017+ Tesla Model 3 Mud Flap Installation Instructions

### FRONT MF62 MOUNTING DIAGRAM REAR



Content and images are copyright of Rally Armor® LLC