



2017+ HONDA CIVIC TYPE R (FK8) MUD FLAP INSTALLATION INSTRUCTIONS

View instructions and photos online www.rallyarmor.com

CARE AFTER INSTALLATION Once installed, the vehicle owner is responsible for the condition of the mud flaps and all costs associated with replacing damaged or lost parts. Warranty covers manufacturer defect on new, never installed parts.

⚠ Watch for blind spots when parking ⚠ Avoid contact with curbs, bumps and objects that can compress the flaps with excessive force. Be sure to check wheel clearances, especially on vehicles equipped with aftermarket wheels and suspensions.

QUESTION ON INSTALLATION? CONTACT US ONLINE www.rallyarmor.com/support

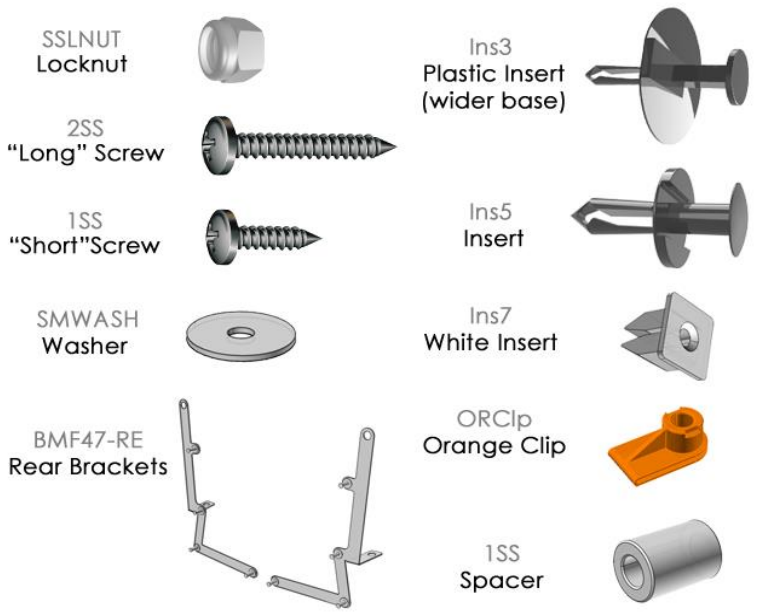
NEED TO PURCHASE REPLACEMENT PARTS? SEND RECEIPT OR PHOTO OF RALLY ARMOR LOGO ON FLAPS TO US www.rallyarmor.com/support

IMPORTANT NOTES



INSTALLATION KIT CONTENTS

QUANTITY	PART	ITEM ID
8	Stainless Steel Locknut	SSLNUT
2	"Long" Stainless Steel Screw	2SS
2	"Short" Stainless Steel Screw	1SS
20	Washer	SmWash
2	Black Insert (Wider Base)	Ins3
2	Black Insert	Ins5
2	White Insert	Ins7
4	Orange Clip	OrClp
2	Rear Bracket	BMF47-RE
2	Plastic Spacer	1SP



Recommended Tools Low-profile, ratcheting offset or stubby Phillips screwdriver, small flathead screwdriver, pick, 7/16" wrench, panel removal tool. **Important Tips** Installation should be done on an even surface. The hardware self-threads so avoid overtightening.

RALLY ARMOR - A BIT ABOUT OUR STANDARD IN MUD FLAPS

Rally Armor mud flaps are fabricated from a high grade polyurethane plastic that is rigorously reviewed for quality and consistency. As with all manufacturing processes, controlled conditions and multiple QC checkpoints minimize major irregularities, however certain very minor surface layer marks appear periodically. These are visual variations that do not affect construction nor do they impede the performance of the flaps. Most matte away as the material ages naturally with continued exposure to the outdoors. Each flap is unique in appearance yet all are equally structurally sound.

2017+ HONDA CIVIC TYPE R (FK8) MUD FLAP INSTALLATION INSTRUCTIONS

FRONT MUD FLAP INSTALLATION

Hardware for 1 front flap → 1 x INS3; 1 x INS7; 2 x ORCLP; 1 x 1SP; 1 x 1SS; 1 x 2SS; 5 x SMWASH

Turn the steering wheel towards the side you are working on to gain access to the inner wheel well area.

FIGURE A A-1 Use a pick to press inner pin of the retainer. Remove the outer retainer with panel removal tool. A-5 Remove inner fender liner fastener. A-2-3-4 Unscrew, remove and set aside OEM retainer screws 2, 3 and 4 for later. You will re-use them to complete installation.

FIGURE B Pull liner away to remove the two lower metal spring clips. Install White Insert INS7 fastener in the upper square mounting hole. Place 2 Orange Clips (OrClp) over the 2 lower mounting points. Re-install liner making sure the Clips do not shift in the process.

FIGURE C Remove and discard the inner portion from the base of Insert INS3. Place Long Screw (2SS) into Washer (SmWash) through innermost mounting point of mud flap into a Spacer (1SP) then thread into INS3 Insert.

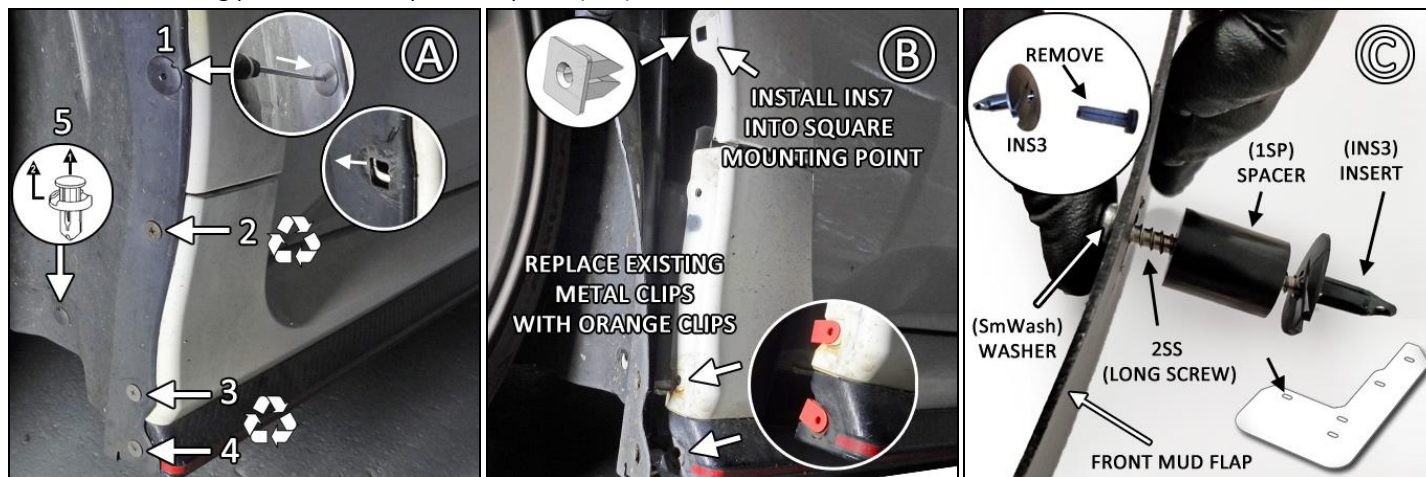
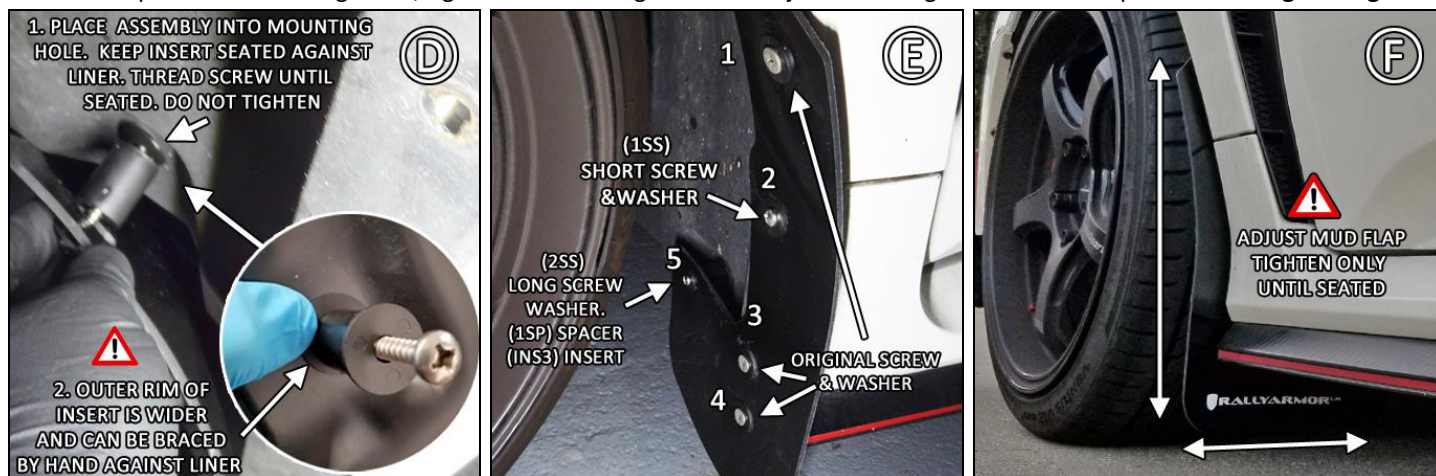


FIGURE D INS3 Insert assembly goes into mounting point 5. It should be firmly seated against the liner. Hold female base portion of insert securely against liner to prevent it from spinning. Continue threading the Long Screw (2SS), keeping the Insert seated against liner during this process. Tighten until washer is *almost* seated against the flap. Do not fully tighten so you can adjust later.

FIGURE E Position the mud flap against the corresponding mounting points on the liner. Place factory or OEM screws through washers (SmWash) for mounting points 1,3 and 4. Place a Short Screw (1SS) into a Washer (SmWash) then thread into bottom mounting point 2.

FIGURE F Align the outer edge of the flap by making slight angle adjustments. Walk away from the vehicle to observe the position. After the flap is even with the ground, tighten all mounting screws until just seated against the mud flap. **Avoid overtightening.**



2017+ HONDA CIVIC TYPE R (FK8) MUD FLAP INSTALLATION INSTRUCTIONS

REAR MUD FLAP INSTALLATION

Prepare 1 x BMF47 left or right side. Hardware for 1 rear flap → 1 x INS5; 4 x SSLNUT; 5 x SMWASH

FIGURE G. From the side you are installing on, remove underside factory fabric liner retainer.

Separate female from male portion of the fasteners first, then remove the entire assemblies. Set them aside for reinstallation later.

FIGURE H Remove the front most rear valance-to-bumper retainer clip. Remove upper OEM liner retainer screw from the front.

FIGURE I Create a slight curve into the Rear Bracket (BMF47-RE) at point shown in Figure I. Exact match to bumper is not required.

DO NOT BEND THE BRACKET OR CURVE BEYOND THE SIDE PROFILE OF THE BUMPER ARCH.

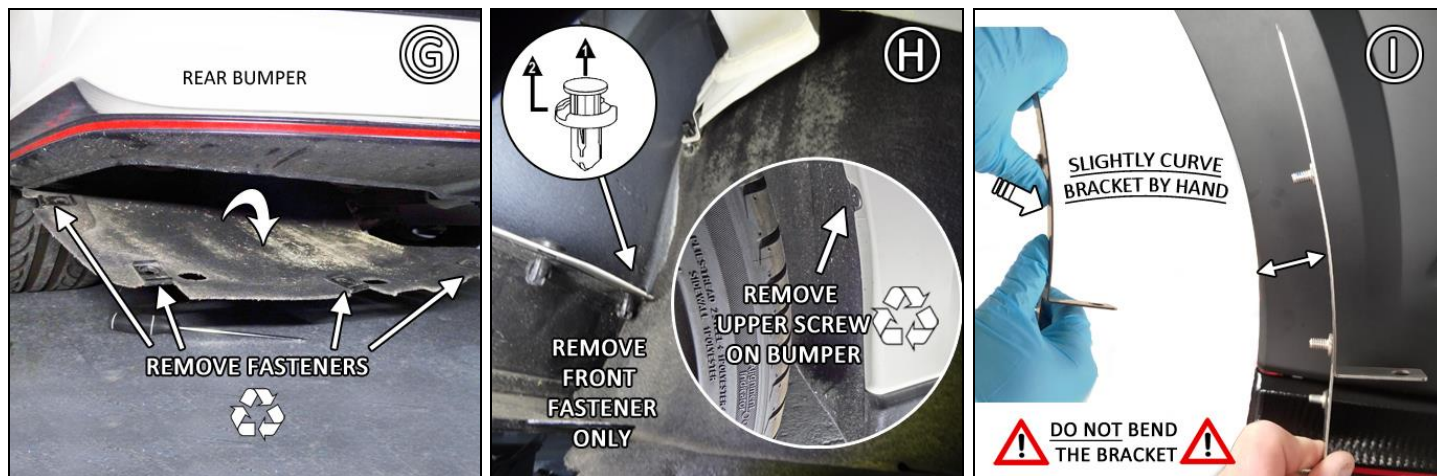


FIGURE J To nest the inner rear section of the mounting Bracket close to the liner after it's installed, gently curve the inner rear section of the bracket by hand as shown in Figure J. **DO NOT CURVE THE BRACKET AGGRESSIVELY BEYOND THE LINER.** Make slight adjustments.

FIGURE K & L Position Bracket sideways as shown, then rotate 90 degrees to install the rear tab between the fender liner and bumper skin.

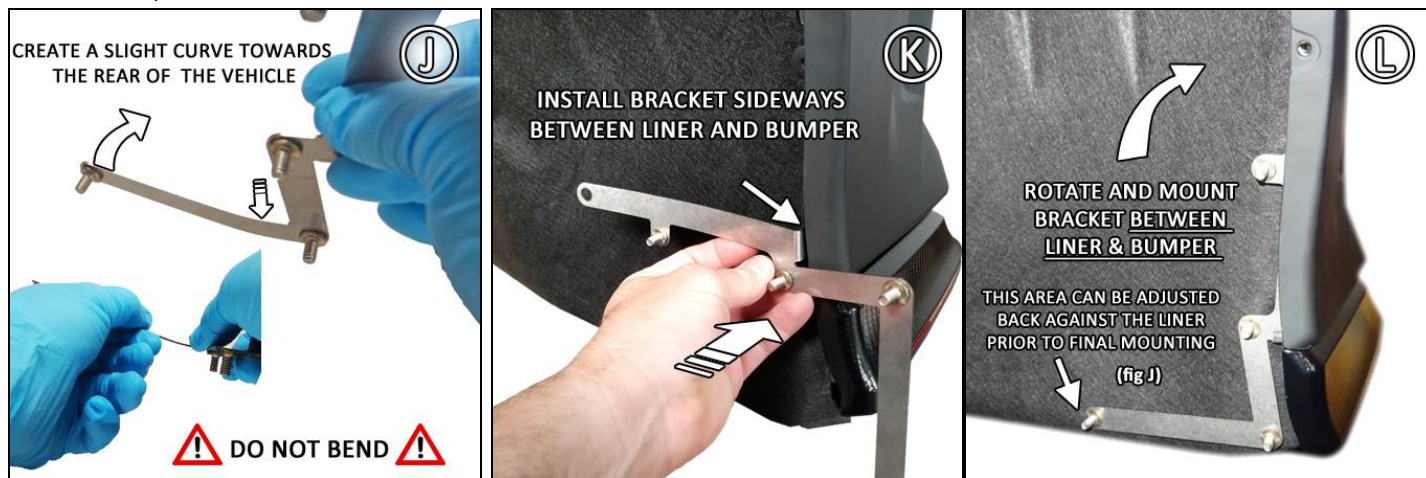


FIGURE M Place INS5 Insert over tabbed end of the metal Bracket to secure mounting point as shown in Figure M.

Make sure the base of the tabbed end of the Bracket is seated against bumper skin. Make sure the base of INS5 Insert is flush against the Bracket then depress inner insert to lock in.

FIGURE N Position the mud flap with the logo facing the rear of the vehicle against corresponding mounting points on the bracket. Place factory OEM screw through Washer (SmWash) and fasten the topmost mount, as shown in Figure N.

2017+ HONDA CIVIC TYPE R (FK8) MUD FLAP INSTALLATION INSTRUCTIONS

The remaining mounts use Locknuts (SSLnut) to secure the flap to the Bracket. Loosely hand thread Locknuts over the Washers.

FIGURE O Reinstall fabric liner fasteners removed in Figure G. Align outer edge of the flap by making small angle adjustments to the flap then walk away to make sure it's even with the ground. Tighten hardware only until seated against mud flap.



RALLYARMOR®
HMF47 MOUNTING DIAGRAM

