



Intake kit Installation Instructions: 2008 Polaris Ranger RZR 800cc Powersports

advanced FLOW engineering™
 P.O. Box 1719
 Corona, CA 92878
 Support: 951-493-7100
 www.aFepowersports.com

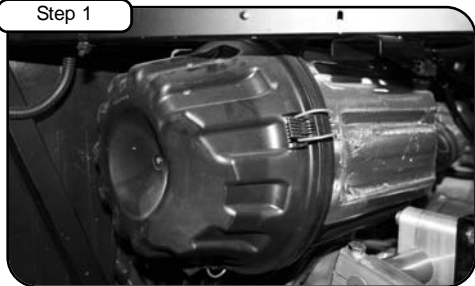
Kit P/N:	85-10034		
Make:	Polaris		
Model:	Year:	Engine:	
Ranger RZR	2008	800cc	

Tools Required:
7/16" socket or wrench
5/16" nut driver
1/4" nut driver
Flat head screwdriver
Ratchet w/ extension
5/32" allen key

Parts list:	
2 Air filters (Pro-GUARD 7™ 87-30018 & Pro Dry S™ 81-30018)	1 Fitting, elbow
1 Housing	1 Grommet, rubber
1 Cover	
1 Coupler, housing elbow	
1 Insert tube, ring 2-3/4" x 1"L	
3 Screws, button head M6	
3 Washers, wavy	
1 Restore kit	
1 Pre-filter	



Complete Kit w/ Parts



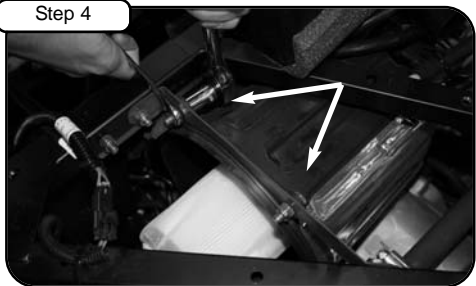
Step 1
 Complete Stock Intake. Note: for easier install, remove bed from vehicle.



Step 2
 To remove air-box cover, un-clip upper half of air box with OE air filter and remove.



Step 3
 Disconnect crankcase line and temp sensor from air box. Loosen clamp with 1/4" nut driver or flat head screwdriver.



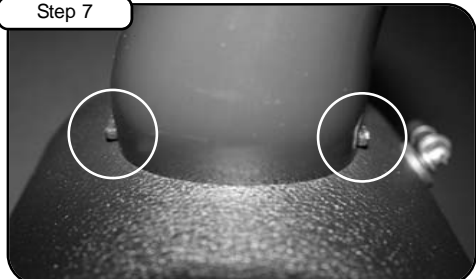
Step 4
 With 7/16" socket or wrench loosen and remove the 2 bolts holding in air box.



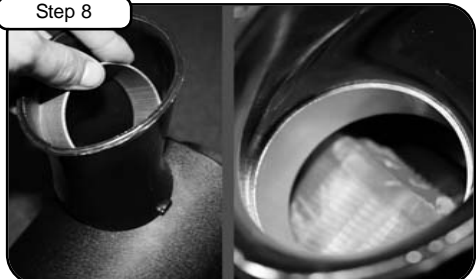
Step 5
 Remove air box from intake tube.



Step 6
 Place coupler into housing using guides to seat in hole.



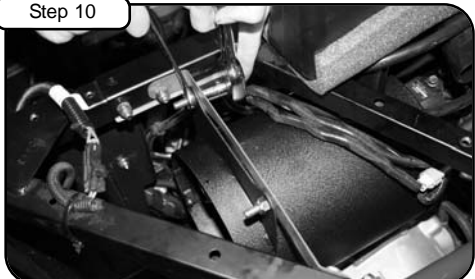
Step 7
 Make sure guides are set in place, 2 outside and 2 inside of housing. (Guides on coupler between housing to prevent from moving). Refer to factory air box for coupler position.



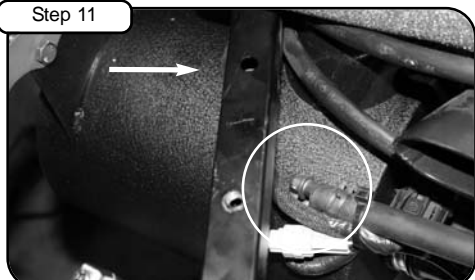
Step 8
 Install aluminum ring inside coupler. Place ring inside of coupler from top, push and set between coupler and housing.



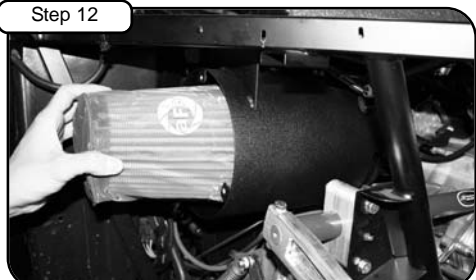
Step 9
 To install housing into RZR, guide into factory intake tube and position to bracket. Use factory screws from step 4. Guide coupler to factory position. Do not tighten.



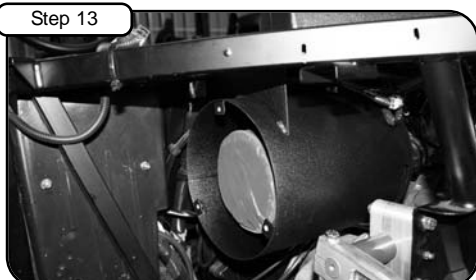
Step 10
 Tighten all screws with 7/16" socket and wrench.



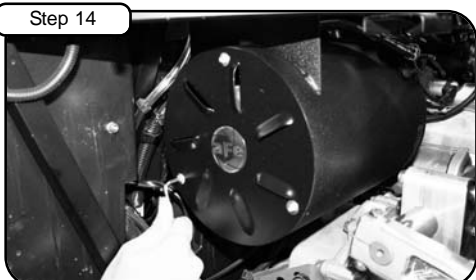
Step 11
 With grommet and elbow provided attach to hole on housing and re-install crank case line from step 3. Tighten clamp using 1/4" nut driver and re-connect temp sensor harness.



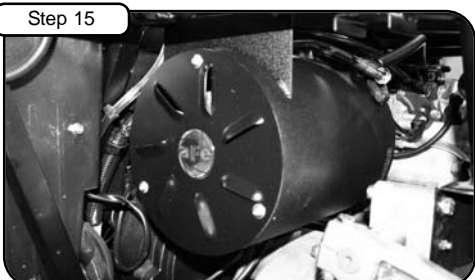
Step 12
 Install pre-filter on air filter and install in housing.



Step 13
 Tighten clamp through slot on side of housing using 5/16" nut driver.



Step 14
 Attach cover to housing, using button head screws and wavy washers provided and tighten using 5/32" allen key.



Step 15
 Your installation is now complete. Please check all bolts and clamps periodically. Re-tighten if necessary. Thank you for choosing aFe!

Note: Filter Cleaning and Re-oiling: When cleaning your aFe filter, be sure to use only aFe's "Restore Kit" (aFe P/N: 90-50000 gold oil aerosol, or aFe P/N: 90-50500 gold squeeze oil).
Filter Replacement: PN: 87-30018 **Pro-GUARD 7™** (black w/gold media) or **Pro Dry S™** P/N: 81-30018 (black w/white media) **Pro Dry S™** cleaning: see cleaning instruction sheet 06-00074.