



TYPHOON INTAKE SYSTEMS

INTAKE SYSTEMS FOR VEHICLES LISTED ARE 50 STATE LEGAL. SEE KNFILTERS.COM FOR CARB STATUS ON EACH PART FOR A SPECIFIC VEHICLE.

INSTALLATION INSTRUCTIONS

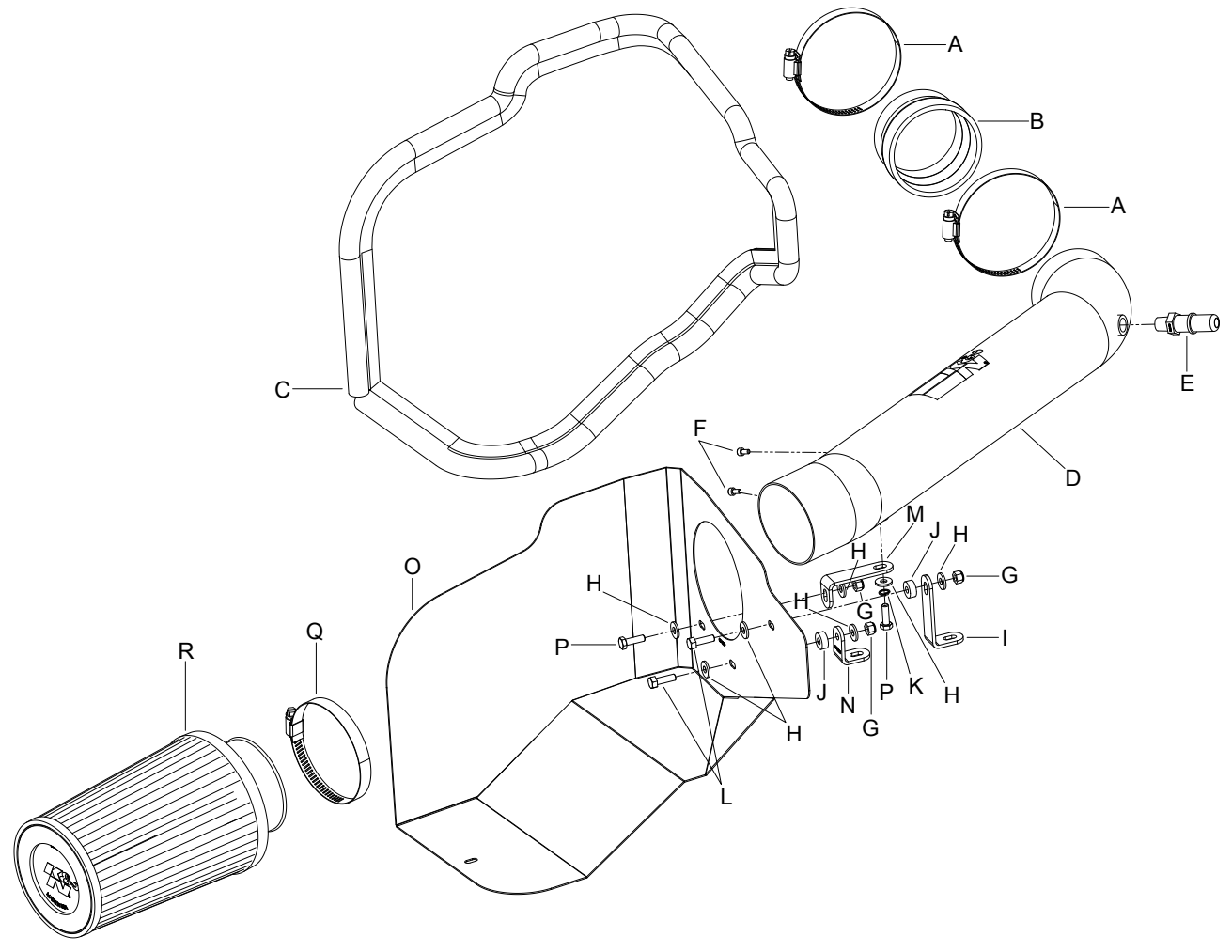
69-3532TTK
FORD / MERCURY
2004-2011 Crown Victoria
2004-2011 Grand Marquis
V8-4.6L

TOOLS NEEDED:

- 3.5mm Allen
- 4mm Allen
- 10mm Socket
- Extension
- Flat blade Screwdriver
- Phillips Screwdriver
- Pliers
- Ratchet

PARTS LIST:

Description	Qty.	Part #
A	2	08601
B	1	08186
C	1	102470
D	1	27497
E	1	082628
F	2	07733
G	3	07512
H	7	08275
I	1	07195
J	2	06555
K	1	08198
L	2	07795
M	1	07805
N	1	070066
O	1	074089
P	2	07812
Q	1	08624
R	1	RU-5122

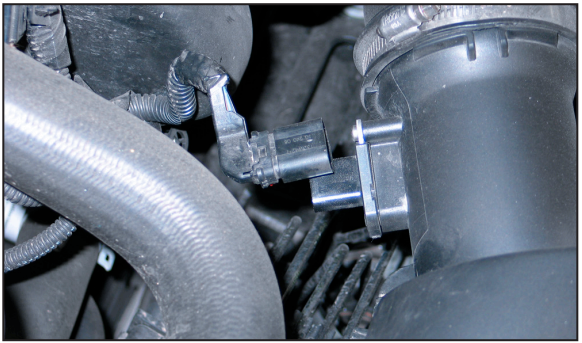


NOTE: FAILURE TO FOLLOW INSTALLATION INSTRUCTIONS AND NOT USING THE PROVIDED HARDWARE MAY DAMAGE THE INTAKE TUBE, THROTTLE BODY AND ENGINE.

TO START:

1. Turn off the ignition and disconnect the negative battery cable.

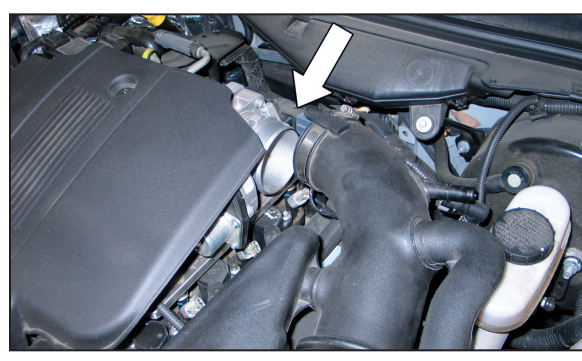
NOTE: Disconnecting the negative battery cable erases pre-programmed electronic memories. Write down all memory settings before disconnecting the negative battery cable. Some radios will require an anti-theft code to be entered after the battery is reconnected. The anti-theft code is typically supplied with your owner's manual. In the event your vehicles' anti-theft code cannot be recovered, contact an authorized dealership to obtain your vehicles anti-theft code.



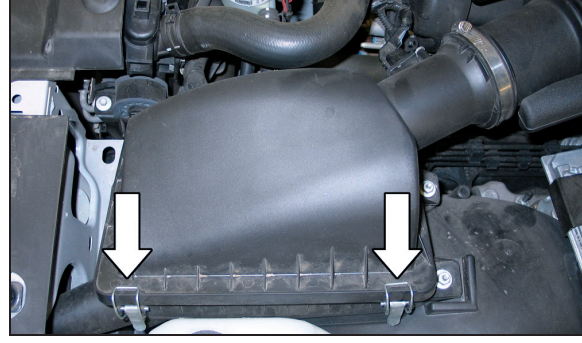
2. Disconnect the mass air sensor electrical connection.



3. Disconnect the crank case vent hose from the intake tube.



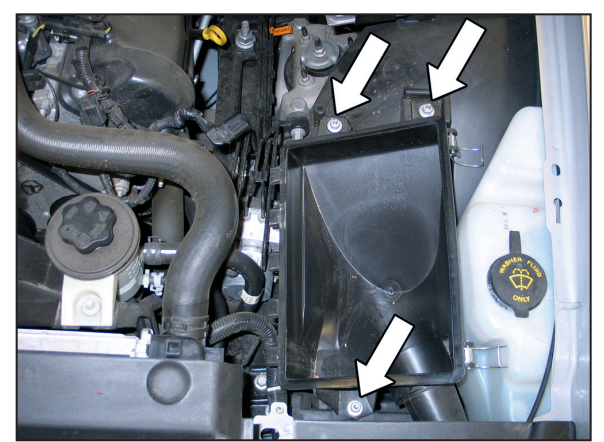
4. Loosen the hose clamp securing the factory intake tube to the throttle body and then disconnect the intake hose from the throttle body.



5. Release the two clips securing the upper air box to the lower air box.



6. Remove the upper air box and intake tube assembly from the vehicle.

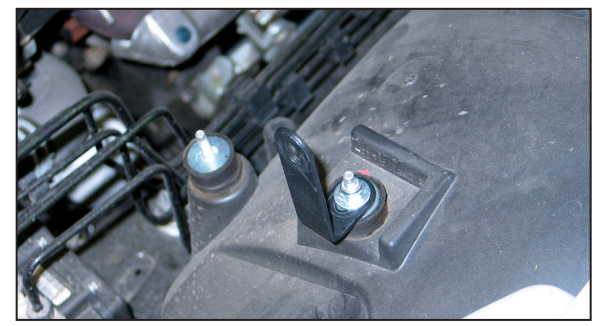


7. Remove the three nuts securing the lower air box into the engine compartment.

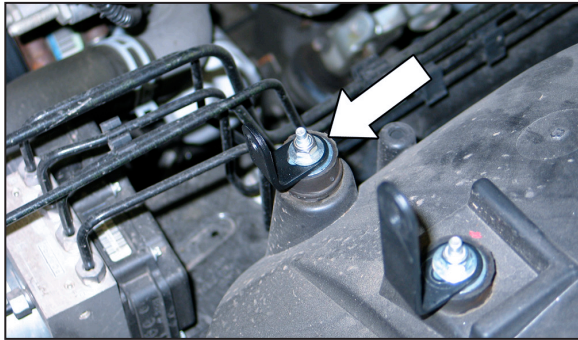


8. Remove the lower air box assembly from the vehicle.

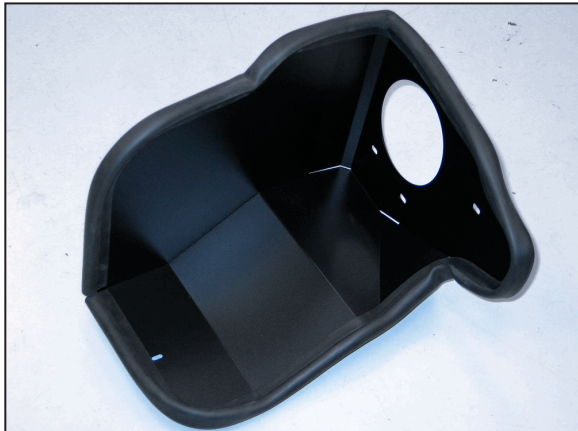
NOTE: K&N Engineering, Inc., recommends that customers do not discard factory air intake.



9. Install the provided heat shield mounting bracket (07195) onto the upper most rear factory air box mounting stud as shown.



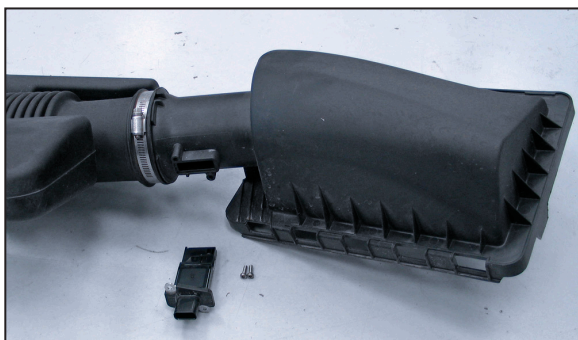
10. Install the provided heat shield mounting bracket (070066) onto the lower most rear factory air box mounting stud as shown.



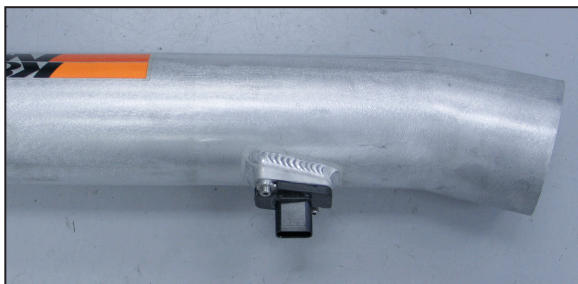
11. Install the provided edge trim onto the heat shield as shown.
NOTE: Some trimming of the edge trim will be necessary.



12. Install the heat shield assembly into the engine compartment and secure to the previously installed brackets and the forward factory air box mount with the provided hardware.



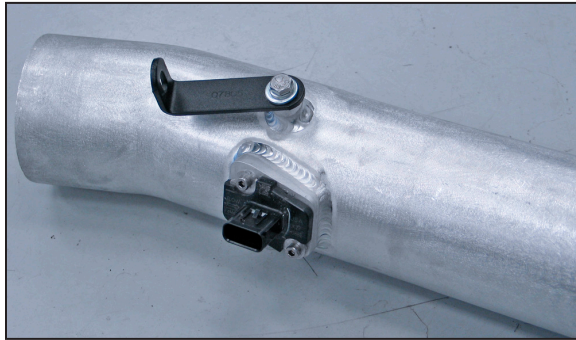
13. Remove the two screws securing the mass air sensor to the factory air box and then remove the sensor from the air box.



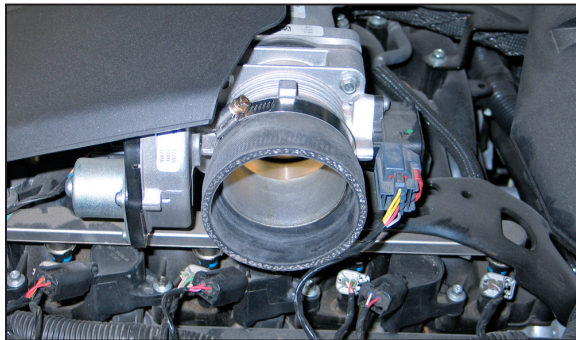
14. Install the mass air sensor into the K&N intake tube and secure with the provided hardware.



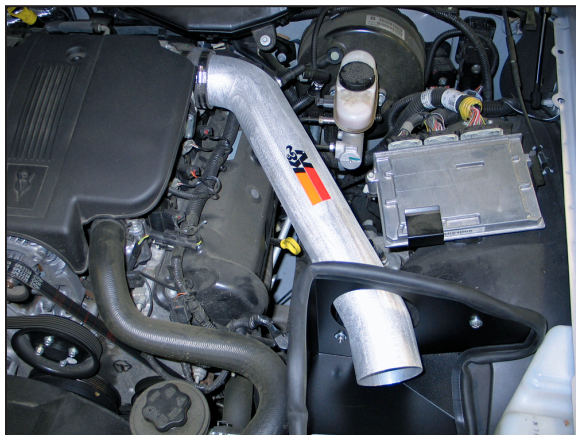
15. Install the provided crank case vent fitting into the K&N intake tube as shown.
NOTE: Plastic NPT fittings are easy to cross thread. Install the vent fitting "hand" tight, then turn it two complete turns with a wrench.



16. Install the tube mounting bracket (07805) onto the K&N intake tube as shown using the provided hardware.



17. Install the provided silicone hose onto the throttle body as shown and secure with the provided hose clamp.



18. Install the intake tube into the heat shield and then into the silicone hose at the throttle body, secure the tube bracket to the heat shield with the provided hardware. Secure the intake tube to the silicone hose with the provided hose clamp.



19. Connect the crank case vent hose to the fitting installed into the K&N intake tube as shown.



20. Install the K&N air filter onto the intake tube and secure with the provided hose clamp.
RC-5106DK is available to purchase separately. To learn more about Drycharger filter wraps or look up color availability please visit <http://www.knfilters.com>.



21. Reconnect the mass air sensor electrical connection.



22. Reconnect the vehicle's negative battery cable. Double check to make sure everything is tight and properly positioned before starting the vehicle.

23. The C.A.R.B. exemption sticker, (attached), must be visible under the hood so that an emissions inspector can see it when the vehicle is required to be tested for emissions. California requires testing every two years, other states may vary.

24. It will be necessary for all K&N high flow intake systems to be checked periodically for realignment, clearance and tightening of all connections. Failure to follow the above instructions or proper maintenance may void warranty.

ROAD TESTING:

1. Start the engine with the transmission in neutral or park, and the parking brake engaged. Listen for air leaks or odd noises. For air leaks secure hoses and connections. For odd noises, find cause and repair before proceeding. This kit will function identically to the factory system except for being louder and much more responsive.

2. Test drive the vehicle. Listen for odd noises or rattles and fix as necessary.

3. If road test is fine, you can now enjoy the added power and performance from your kit.

4. K&N Engineering, Inc., requires cleaning the intake system's air filter element every 100,000 miles. When used in dusty or off-road environments, our filters will require cleaning more often. We recommend that you visually inspect your filter once every 25,000 miles to determine if the screen is still visible. When the screen is no longer visible some place on the filter element, it is time to clean it. To clean and re-oil, purchase our filter Recharger service kit, part number 99-5050 or 99-5000 and follow the easy instructions.

INTAKE SYSTEMS FOR VEHICLES LISTED ARE 50 STATE LEGAL. SEE KNFILTERS.COM FOR CARB STATUS ON EACH PART FOR A SPECIFIC VEHICLE.

* FREE K&N decal To register your warranty, please see us online at knfilters.com/register. FREE K&N decal *