



Intake kit Installation Instructions: 05-10 Ford Mustang GT V8-4.6L

Kit P/N: 51/54-10293
Make: Ford
Model: Magnum FORCE Stage-2 Air Intake
Year: 2005-2010
Engine: V8-4.6L
NOTE: Excluding Mustang GT 2005 LEV II LEV Engine Test Group 5FMXV04.6VEM, Mustang GT 2007 LEV II ULEV Engine Test Group 7FMXV04.6VBB, Mustang GT 2007 LEV II LEV Engine Test Group 7FMXV05.4VEK, Mustang GT 2008 LEV II ULEV Engine Test Group 8FMXV04.6VBB

2009 Mustang GT LEV II ULEV Engine Test Group 9FMXV04.6VBB, Mustang GT 2009 LEV II LEV 9FMXV05.4VEK, Mustang GT 2010 ARB LEV2 ULEV AFMXV04.6VDM

Tools Required:
 10mm socket or wrench
 5/16" nut driver
 Phillips screwdriver
 Ratchet w/ extension
 T-20 torx bit (included)

Parts list:
 1 Air filter (P/N 24-90025 or Pro Dry S™ 21-90025)
 1 Housing, wrinkle black
 1 Tube
 1 Coupling, straight 4-1/2" x 2-1/2"
 2 Clamp, #072
 2 Screw, hex M6 x 1 x 25
 2 Washers, wavy M6
 2 Nut, M6
 2 Washer, flat
 1 Gasket, MAF sensor
 2 Spacer, nylon 1/2" x 1/4" x 1/8"
 2 Screw, phillips #8-32 x 5/16"

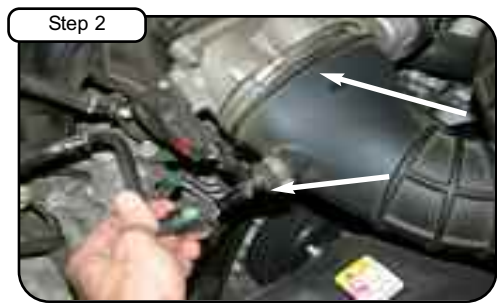


Complete Kit w/ Parts

advanced FLOW engineering™
 P.O. Box 1719
 Corona, CA 92879
 Support: 951-493-7100
 www.aFepower.com



Complete Stock Intake.



With 5/16" nut driver loosen clamp at throttle body. Disconnect and remove OE crank case line.



Loosen the clamp at air box side and remove OE intake tube.



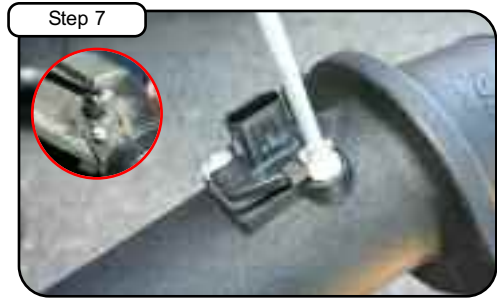
Disconnect MAF sensor harness.



With 10mm socket or wrench loosen the 2 screws holding in OE air box. Lift up and remove OE air box out of vehicle.



With OE screws removed from step 5, install new aFe housing to vehicle. Tighten using 10mm socket or wrench.



With T-20 torx bit remove MAF sensor and (with gasket, nylon spacers and screws provided) install into new tube. Make sure gasket and nylon spacers are between sensor and tube.



Remove factory crank case line from engine.



Install coupler with clamps to tube. Install tube to outside of housing and position coupler on to throttle body.



Install screws/nuts and washer provided to mount tube to housing. Tighten using 10mm socket or wrench.



Tighten clamps with 5/16" nut driver.



Install new 3/8" provided to valve cover side and new tube side.



Reconnect MAF sensor harness.

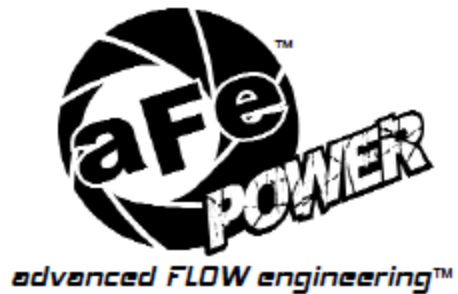


Install air filter and tighten using 5/16" nut driver.



Your installation is now complete. Please check all bolts and clamps periodically. Re-tighten if necessary. Thank you for choosing aFe! Place enclosed CARB EO sticker on a clean/smooth surface on or near the device. EO identification label is required in passing the smog check inspection.

Note: Filter Cleaning and Re-oiling: When cleaning your aFe filter, be sure to use only aFe's "Restore Kit" (aFe P/N: 90-50001 blue oil aerosol, or aFe P/N: 90-50501 blue squeeze bottle oil) Filter Replacement: Magnum FLOW PN: 24-90025 (black w/blue media) or Pro Dry S™ P/N 21-90025 (black w/white media) Pro Dry S™ cleaning: see cleaning instruction sheet 06-00074



Kit P/N: 51-10293 / 54-10293			Included Parts:
Make: Ford			1 Vent Tube Fitting: Small
<u>Model:</u>	<u>Year:</u>	<u>Engine:</u>	Tools Required:
Mustang GT	05 – 10	V8- 4.6L	15mm Wrench

NOTE: If your intake tube has an insert as shown in Figure A, then install the supplied vent fitting with a 15mm wrench as shown in Figure B.

FIGURE A

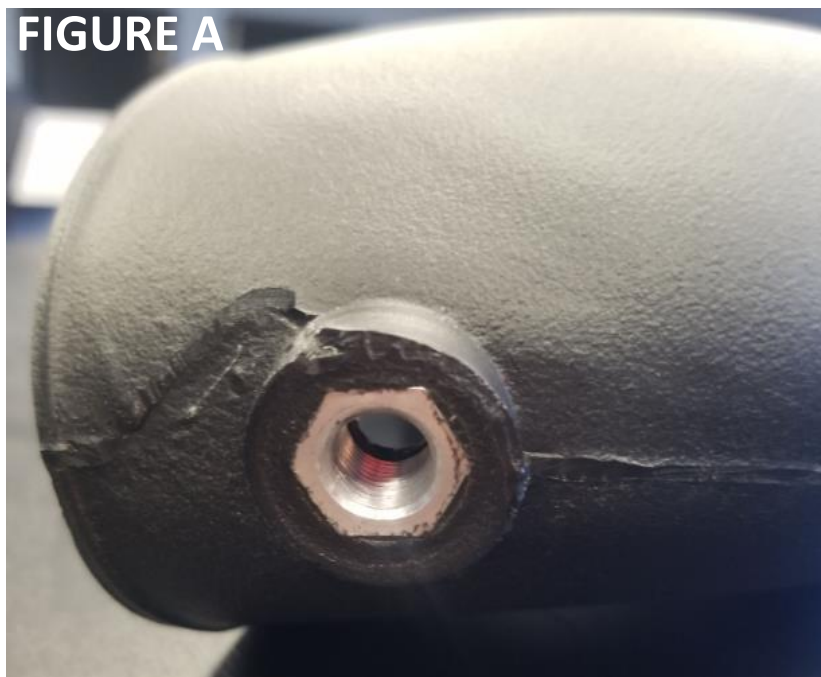


FIGURE B

