



# INSTALLATION INSTRUCTIONS

## 2022 TOYOTA TUNDRA DITCH LIGHT BRACKET



### PRODUCT INCLUDES:

- (2) Ditch Light Brackets
- (2) Mount Hardware Kits

### RECOMMENDED TOOLS:

- Ratcheting 12mm Wrench
- 12mm Socket
- Ratchet
- 2-3" Ratchet Extension
- ½" Wrench
- Masking Tape

THANK YOU FOR PURCHASING RIGID INDUSTRIES' PRODUCTS FOR YOUR VEHICLE.

Please read through all of these instructions and tips before proceeding with the installation. We do our best to provide a simple installation process for all applications, however a professional installation is always recommended.

### IMPORTANT

Always disconnect any power sources connected to your vehicle before servicing fuses or electrical systems.

### STEP: 1

Remove rubber/plastic cap covers near bottom corner of windshield. These will be reinstated, but the passenger side will require some trimming.



### STEP: 2

Open hood.

# RIGID® INSTALLATION INSTRUCTIONS

## STEP: 3

Remove only the top bolt from the hood mount on the hinge, DO NOT remove both hood mount bolts at the same time at any point during the installation.



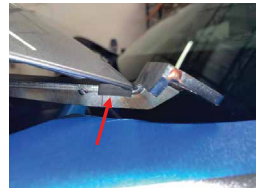
## STEP: 4

Install the ditch light bracket onto the hood hinge bolt, making sure not to pinch the wire on the driver's side. Tighten the bolt up so it is snug but allows the ditch light mount to swing over to complete the installation.



## STEP: 5

Use a socket with a short extension on a ratchet to prevent scratching the paint in the area to remove the lower bolt. For 5" and lights to reduce vibration, rubber trim is provided to put in between the ditch light mount and the edge of the hood. For applications requiring the trim, slide the trim onto the mount and then the bottom hood mount bolt. Remove the lower bolt for the hood mount on the hinge and swing the ditch light mount to align the holes and re-install the bolt.

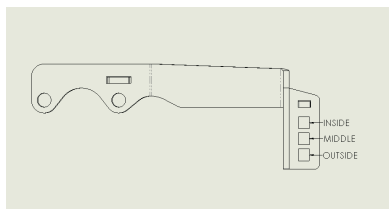


## STEP: 5

Tighten both top and bottom bolts to the manufacture's specification

## STEP: 6

READ AND UNDERSTAND LIGHT MOUNTING LOCATION TO PREVENT DAMAGE TO THE VEHICLE. THESE MOUNTS ARE LOW PROFILE AND DISREGARDING THESE INSTRUCTIONS WILL CAUSE DAMAGE. The outside and inside holes are for 5" and above lights, the middle hole is for 4" and below. Skip to the step in-relation to the light being installed on the vehicle.



## OUTSIDE MOUNTING HOLE

Starting on the driver's side the OUTSIDE hole is used for 5" and larger lights in a straight ahead to 15° turned towards the outside of the vehicle. This hole is shifted to the outside to prevent the windshield wiper from contacting the light mount. The 3/4 long carriage bolt is installed from the bottom up and the hood will need to be open to install the bolt and nut loosely. After the bolt is installed, gently nearly close the hood and then continue with the light installation process. Install the light with the supplied washer and thin nut from the Westcott Designs kit with the light beam directed straight ahead. With the light snug, but still able to spin on the mount, put some masking tape on the windshield wiper and along the edge between the hood and windshield. Close the hood. Go into the vehicle press the start button twice without the brake pedal to turn the vehicle on. Press the wiper switch up so it only completes one cycle. Check to make sure there is clearance between the wiper and the light mount at the desired light direction angle before tightening the light mount fully. Open the hood slowly to make sure the light mount does not come in contact with the body. Complete the same process for the passenger side, but the wiper clearance check does not need to be completed



## MIDDLE MOUNTING HOLE

Starting on the driver's side the MIDDLE hole is used for 4" and smaller lights with mounts that are smaller than the ditch light mounting pad. These lights can be installed at most angles but should still be checked for clearance. The  $\frac{3}{4}$ " long carriage bolt is installed from the bottom up and the hood will need to be open to install the bolt and nut loosely. After the bolt is installed, gently nearly close the hood and then continue with the light installation process. Install the light with the supplied washer and thin nut from the Westcott Designs kit with the light beam directed at the angle desired. With the light snug, but still able to spin on the mount, put some masking tape on the windshield wiper. Close the hood. Go into the vehicle press the start button twice without the brake pedal to turn the vehicle on. Press the wiper switch up so it only completes one cycle. Check to make sure there is clearance between the wiper and the light mount at the desired light direction angle before tightening the light mount fully. Complete the same process for the passenger side, but the wiper clearance check does not need to be completed.

## INSIDE MOUNTING HOLE

Starting on the driver's side the INSIDE hole is used for 5" and larger lights turned 15° or more towards the outside of the vehicle. This prevents the windshield wiper from contacting the light mount. The  $\frac{3}{4}$ " long carriage bolt is installed from the bottom up and the hood can be nearly closed to install the bolt and nut loosely. Install the light with the supplied washer and thin nut from the Westcott Designs kit with the light beam at 5° or more towards the outside of the vehicle. With the light snug, but still able to spin on the mount, put some masking tape on the body under the ditch light mount, up to the base of the windshield. Open the hood slowly to make sure the light mount does not come in contact with the body. Adjust the light angle as necessary to make sure there is approximately  $\frac{1}{4}$ " gap to the body with the hood open. Close the hood. Go into the vehicle press the start button twice without the brake pedal to turn the vehicle on. Press the wiper switch up so it only completes one cycle. Check to make sure there is clearance between the wiper and the light mount at the desired light direction angle before tightening the light mount fully. Complete the same process for the passenger side, but the wiper clearance check does not need to be completed.

## STEP: 7

Re-install the driver's side plastic rubber cap between the hood and windshield. The easiest way to install is with the hood  $\frac{1}{2}$  to fully open.



## STEP: 8

Trim the passenger side rubber cap between the hood and windshield to clear the ditch light bracket based on the photos below. There should be about 2 ¼" from the bottom to the top of the relief cut.



## STEP: 9

Have the wiring for the lights completed by a professional to the light manufacturer's specifications. The battery on hybrid equipped vehicles is under the driver rear seat.

Your installation is now complete.  
**Welcome to the Rigid Nation!**

### WARRANTY INFORMATION

For warranty information, visit [www.rigidindustries.com/about/warranty](http://www.rigidindustries.com/about/warranty) 779 N Colorado St, Gilbert, AZ 85233 • 855-760-5337  
[www.rigidindustries.com](http://www.rigidindustries.com)

RIGID, SR-M Series, and Rigid Industries are registered and/or common law marks owned by JST Performance, LLC, a Delaware limited liability company d/b/a Rigid Industries.



