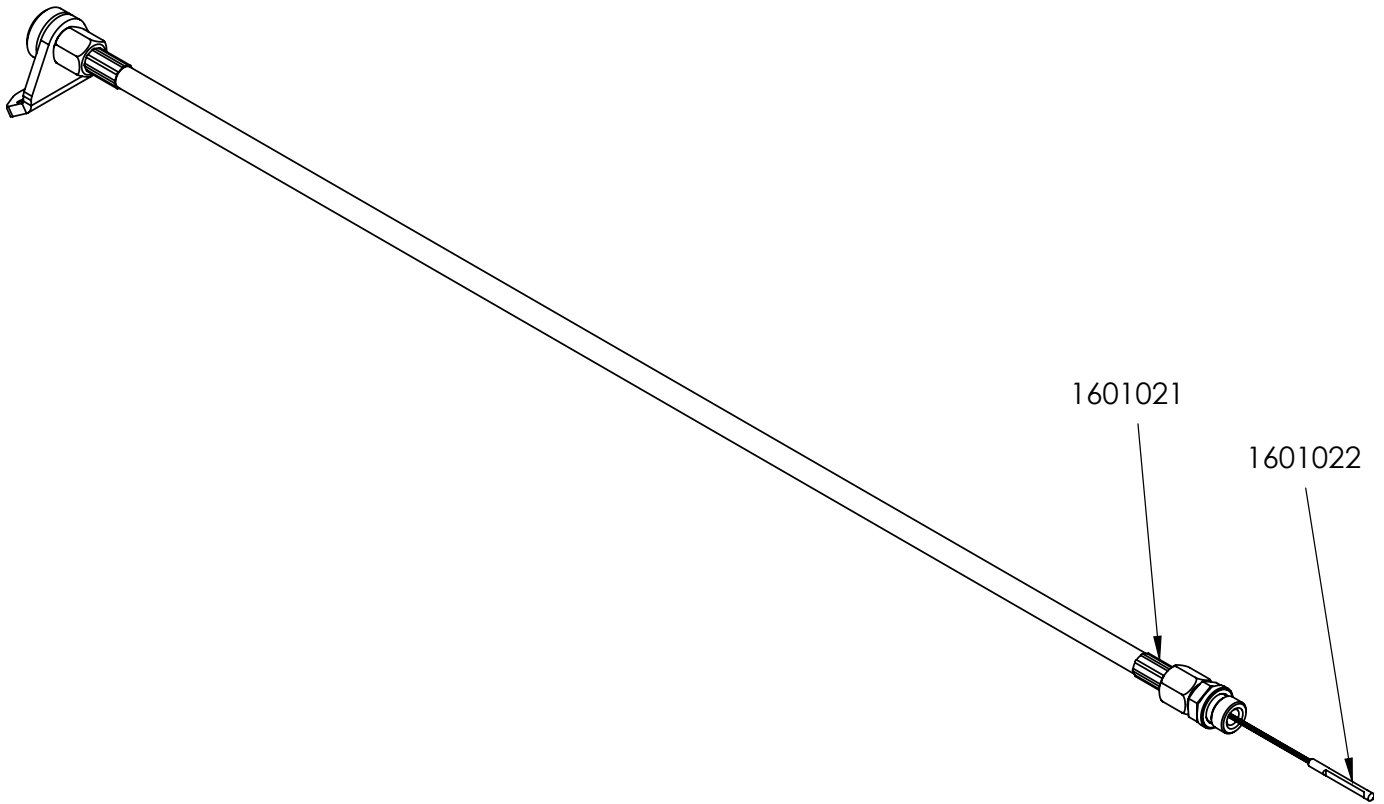




Installation Instructions for  
**22173**  
 TRANSMISSION DIPSTICK  
 FITS: 2015-2019 SILVERADO  
 AND SIERRA WITH 8L90E  
 TRANSMISSIONS

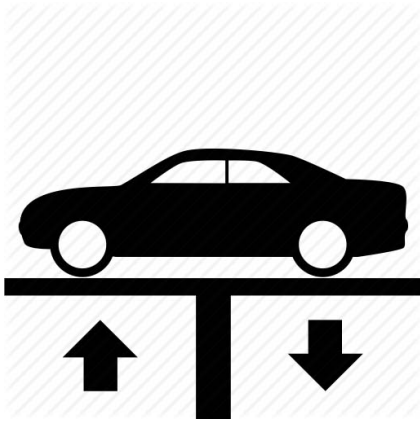


PART NO.	DESCRIPTION	QTY.
1601021	Tube	1
1601022	Dipstick	1
22173BA-01	Hardware Pack	1
3401568	#10 x 1" Self Tapping Screw	3
3401602	Cable Tie	2

## REVIEW INSTRUCTIONS AND VERIFY KIT CONTENTS:

1. Thank you for purchasing B&M 22173 Transmission Dipstick. This kit uses a 36-in. long dipstick tube (braided hose), which may fit other vehicles with 8L90E. Please verify your vehicle's transmission model and check that proper tube routing and mounting location can be achieved in your vehicle.
2. Please take a moment to read and understand these instructions before installing your purchased performance kit. Use the parts drawing and list to verify kit contents.
3. Automatic transmission fluid level will vary at different temperatures and operating conditions. Consult your vehicle's service manual or your dealer's service department regarding correct procedure for consistently checking automatic transmission fluid level and condition.

## REMOVE TRANSMISSION COVER:



Note: Vehicle must be level for stability and to obtain an accurate fluid level.

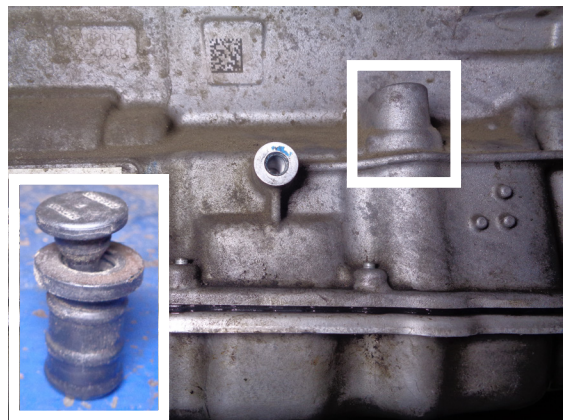
4. Raise vehicle up on a hoist or rack to working height. If you don't have access to a hoist or rack, raise vehicle and support securely with jack stands, then allow vehicle to cool before continuing.

### WARNING:

To avoid vehicle damage and/or serious bodily injury, secure vehicle in place so it cannot move while being worked on.

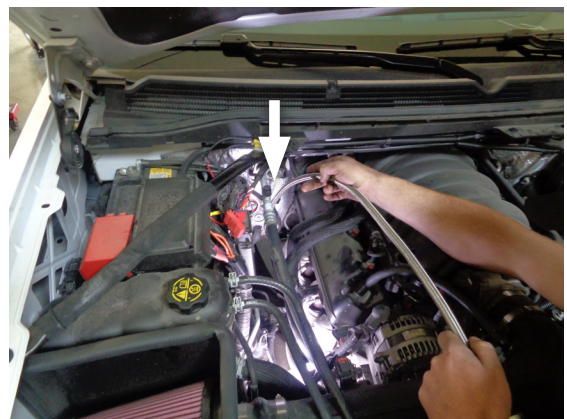


5. Remove bolts (x3) attaching cover to passenger side of transmission. Retain for later use.



6. Release fill plug cap then remove it from passenger side of transmission.

## INSTALL TRANSMISSION DIPSTICK:

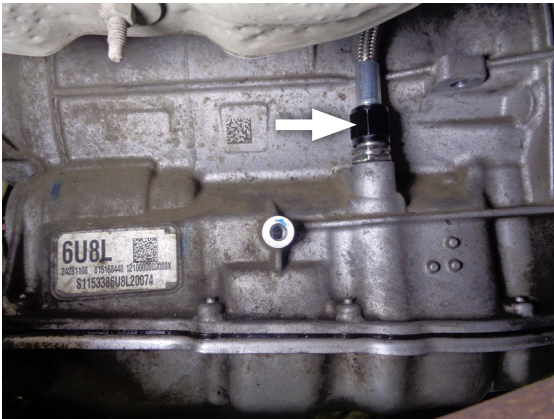


7. Place tube (1601021) into vehicle near engine firewall.





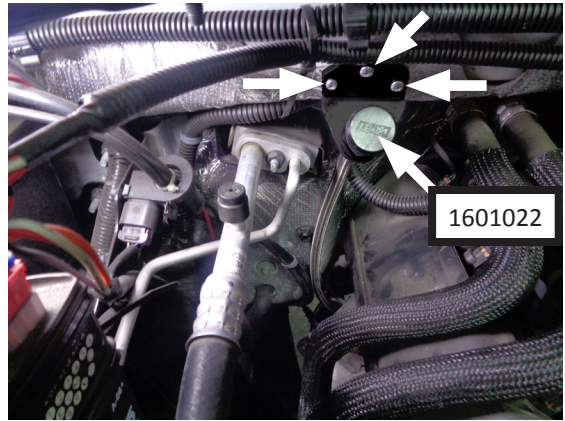
8. Find a suitable route for tube. Keep tube from touching exhaust components, as extreme heat can damage tube. Also keep tube from touching wires, brake lines, etc., as steel braid may cause chafing damage.



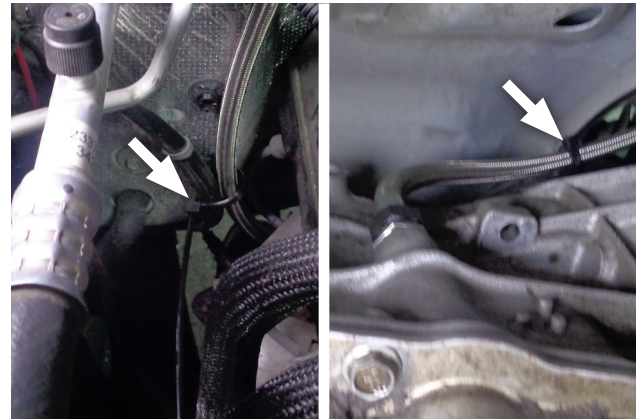
9. Push tube into fill port on passenger side of transmission until it's fully seated.



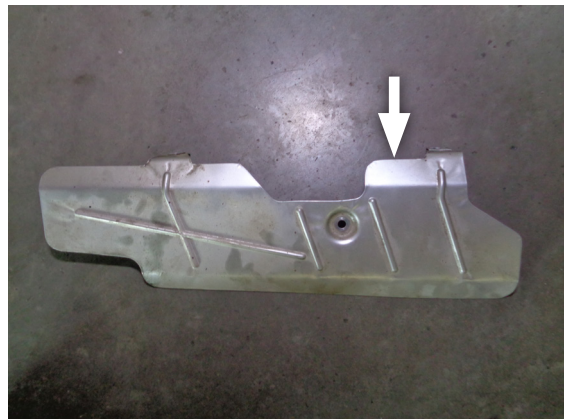
10. Arrange tube so there are no kinks along its length then set mount on firewall. Repeatedly remove and insert dipstick into tube to ensure it won't bind once tube is secured.



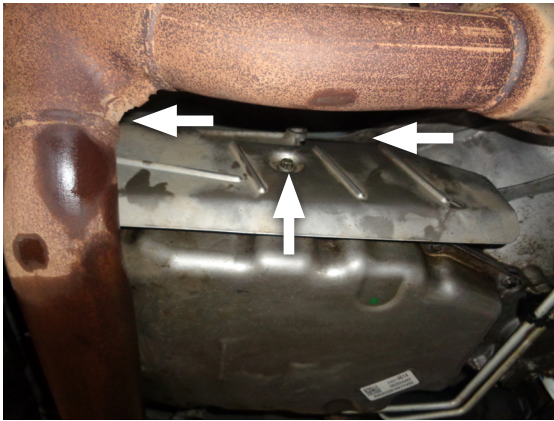
11. Install mount using Self Tapping Screws (x3) (3401568), checking for bindings in tube as each screw is fastened, then install dipstick (1601022) into tube and tighten it (until o-ring is compressed).



12. Use zip ties (x2) (1601022) to secure dipstick assembly. Make sure tube remains as straight as possible.



13. OPTIONAL: If cover won't re-install properly, you may have to trim or bend a portion of its front flange.



14. Install bolts (x3) to fasten cover (removed step 5) to passenger side of transmission.

### MARK TRANSMISSION FLUID LEVEL ON DIPSTICK:

#### WARNINGS:

There is a risk of personal injury while working near engine and transmission with vehicle running. Wear properly fastened and close-fitting work clothes. Do not touch hot or rotating parts.

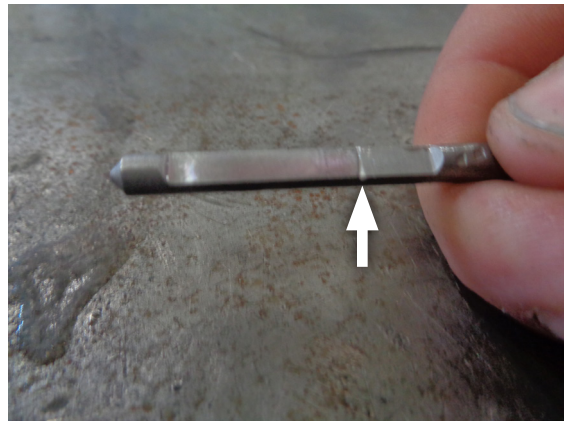
**15. DIPSTICK USE:** To accurately monitor your transmission fluid level, it is important to always follow the same procedure when checking it:

- Check transmission fluid level at operating temperature. If necessary, drive vehicle for 10-15 minutes to bring transmission up to temperature.
- Park on level ground. With vehicle running at idle, slowly move gear shift level from PARK down through entire gear range, then back to PARK again, stopping for a few seconds at each gear position. With transmission in PARK, leave vehicle running at idle.
- Remove dipstick, wipe it off and reinstall it (with knob fully hand tight). Then remove dipstick again to check fluid level.

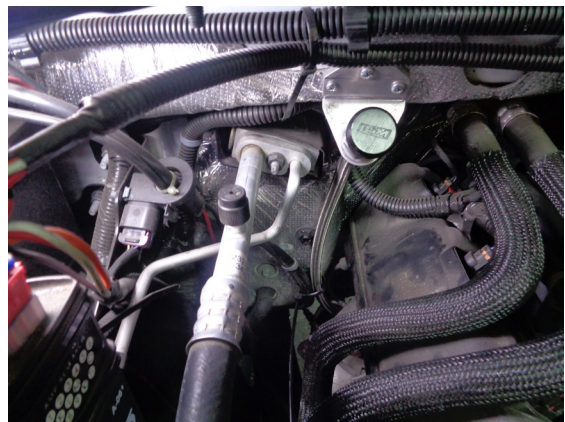
16. If your transmission fluid is low, top it off according to vehicle manufacturers procedure, which may be available through vehicle owners manual, dealers service department or website.

**17. ADDING TRANSMISSION FLUID:** Only use transmission fluid specified by your vehicle's manufacturer.

- Add transmission fluid slowly using tube and pump or funnel, checking often to avoid over-servicing.
- If you should over-service transmission, disconnect lower end of dipstick tube and suck fluid from transmission using a vacuum pump.



18. Once you have completed transmission fluid level check, remove dipstick and mark current fluid level on it. This will be your reference for future vehicle maintenance.



Congratulations, the installation of your B&M Transmission Dipstick is now complete!

**NOTE:** B&M Racing maintain a highly trained technical service department to answer your technical questions, provide additional product information and offer various recommendations.

**Technical Service:** (707) 544-4761

Monday – Friday: 7:30 am to 5:00 pm Pacific Time  
(Closed Saturday and Sunday)

#### MAIN OFFICE:

100 Stony Point RD., Suite 125  
Santa Rosa, CA 95401

